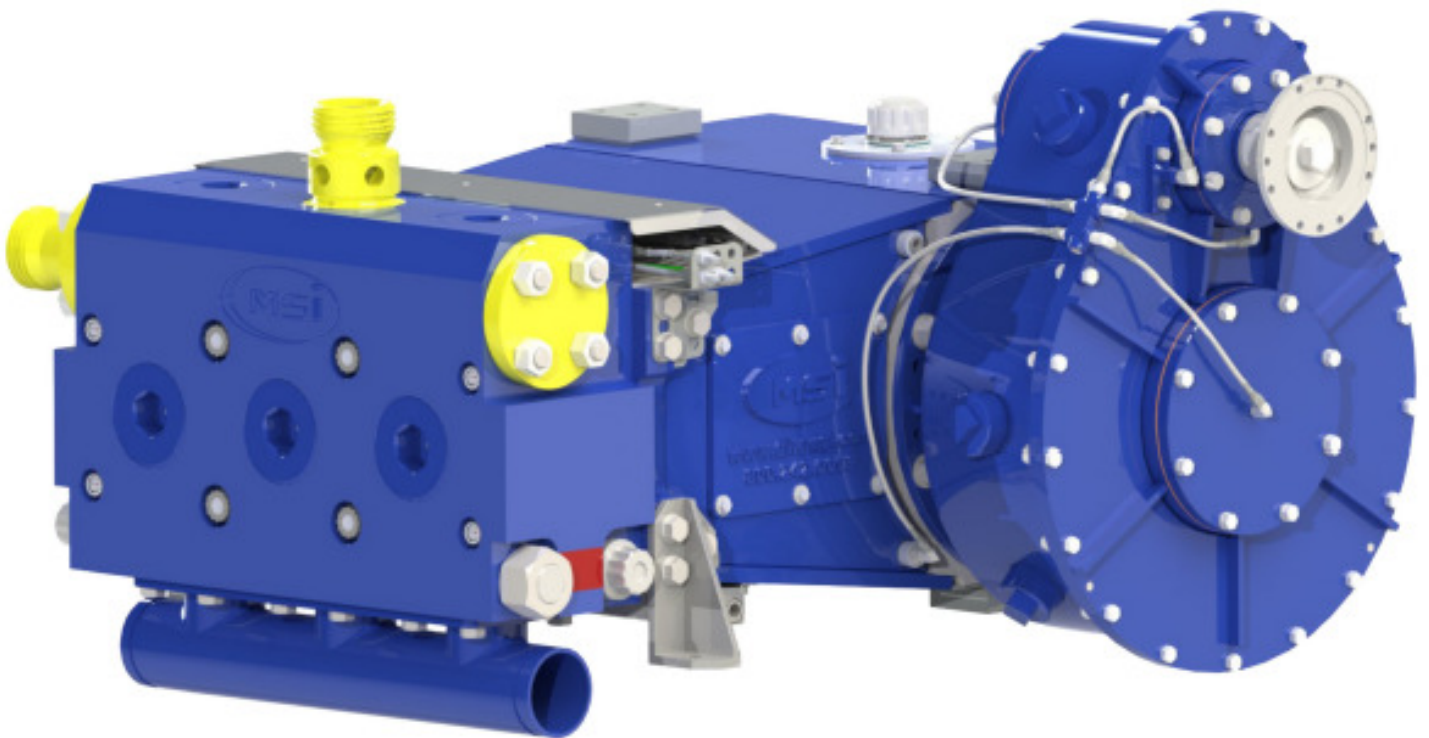




TIH-600 HP TRIPLEX



The TIH-600 is a 600 brake horsepower triplex pump that comes with many standard features, but its most important feature is the MSI commitment to Quality.

The MSI TIH-600 Pump is a re-engineered well service pump. The first compact well service pump to utilize the 2 plunger design which eliminates contamination of the power end. The MSI Hybrid Triplex Pump is the first and only of it's kind which includes:

- 16 Position Gear Box for both left and right-hand configurations
- 2 Fluid End options for either high-pressure or high-volume service
- Power Frame designed for added strength and longevity
- Tools, toolbox, drip-pan and the suction manifold are standard items with each pump.
- Plunger Greasing System can be installed and shipped with the pump for an extra charge.
- All external and internal components are phosphate coated for corrosion protection.

The MSI TIH-600 is equipped with the ON-CENTER CROSSHEAD design which:

- Eliminates 6250 ft-lbs of torque about the wrist pin compared to offset design
- Lowers crosshead bearing pressure by 30% at the start of stroke
- Lowers crosshead bearing pressure by 100% at end of stroke
- Allows for installation of pumps back to back within 102"
- Reduces friction between crosshead and crosshead guides
- Results in low operating lube oil temperatures
- Results in high mechanical efficiency

Left/Right configuration changes are made easier by the following features in the TIH-600:

- Dual lube-pipe system eliminates changes to external lube supply lines.
- Bolt-on feet mean removing and reversing crankshaft is no longer required.
- Top and bottom flange adapters for changing Oil Breather cap and Oil Drain connection

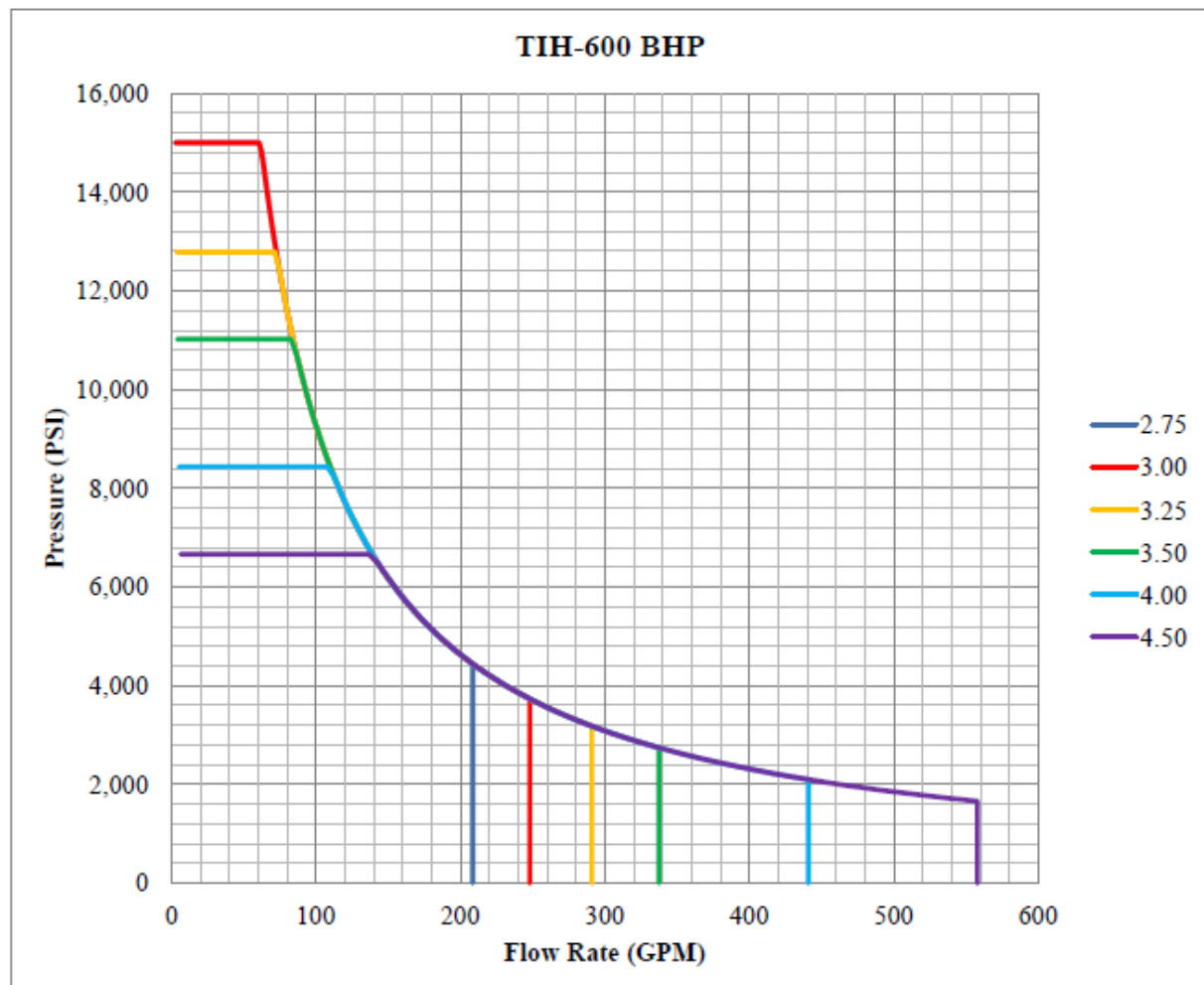
Fluid Ends can be changed to encompass a wide range of high pressure or high volume requirements.

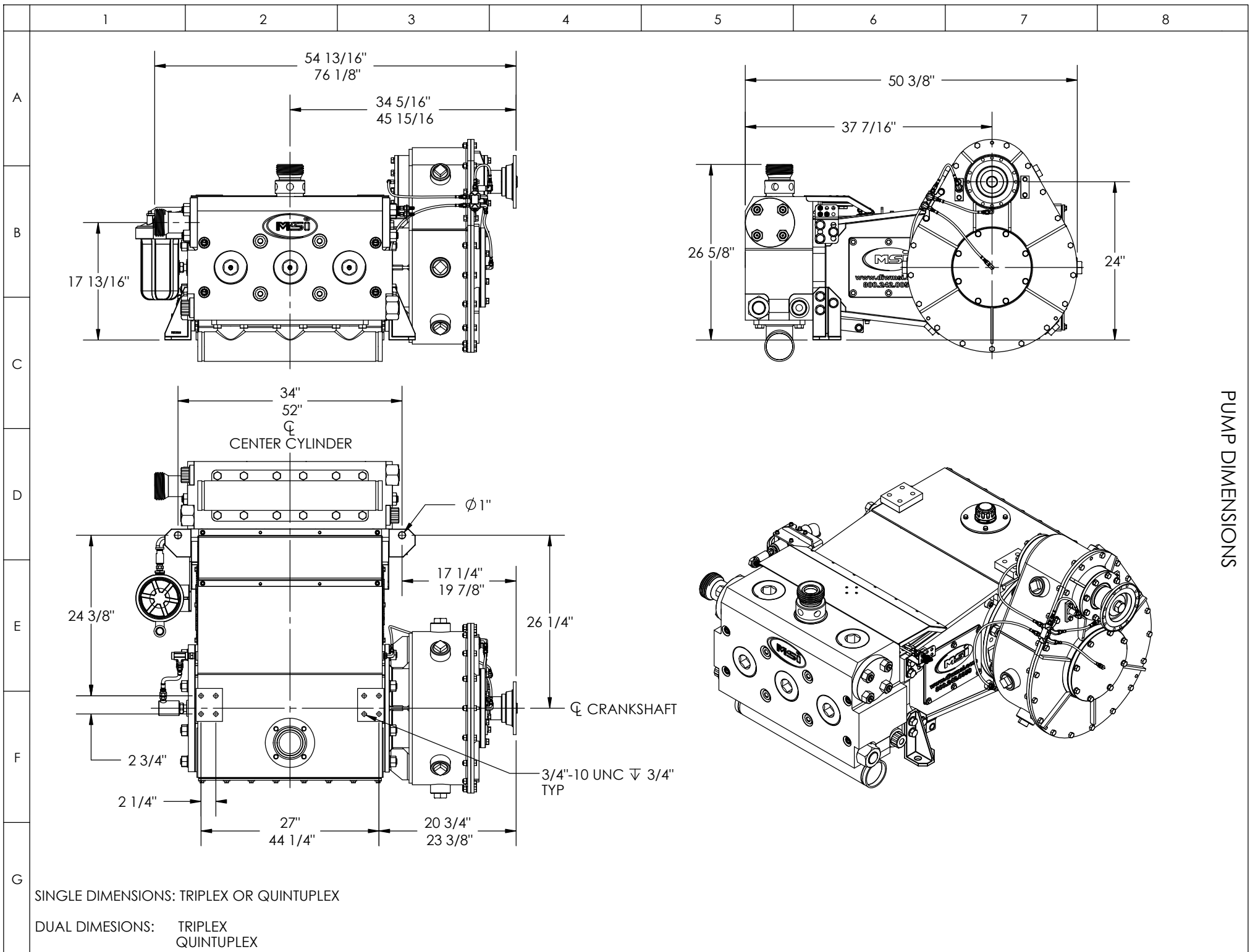
- Small Fluid End accepts 2-3/4 and 3-inch plungers for high pressure service
- Large Fluid End accepts 3-1/2, 4, and 4-1/2 plunger sizes for high volume service

The TIH-600 has a footprint of 19 square feet making it ideal for jobs where space is at a premium.

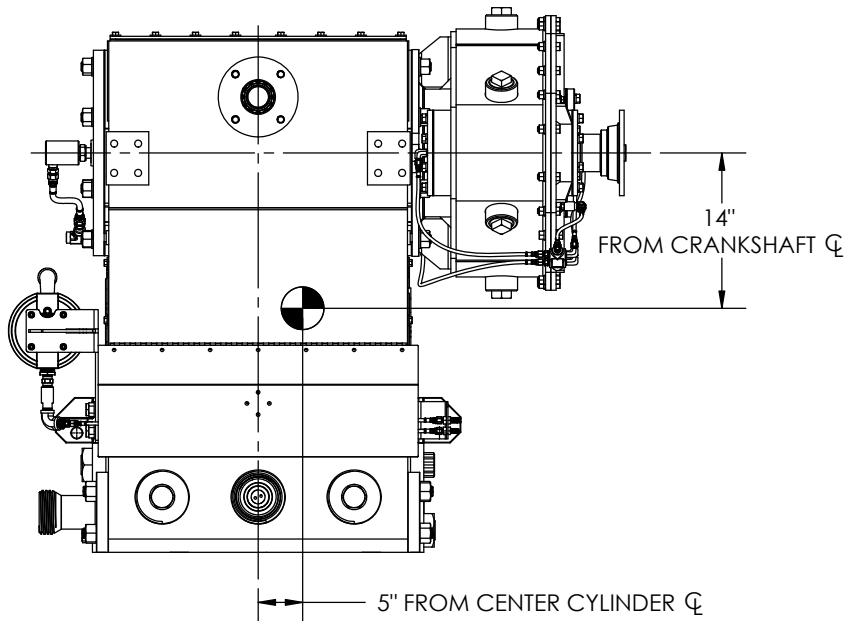
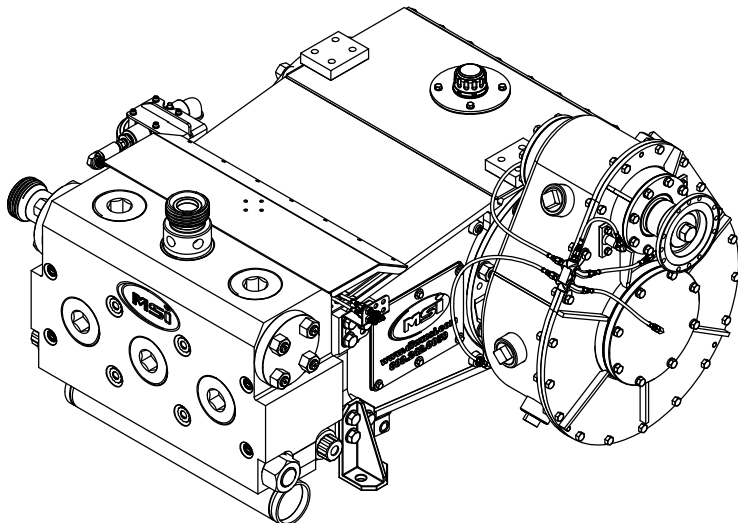
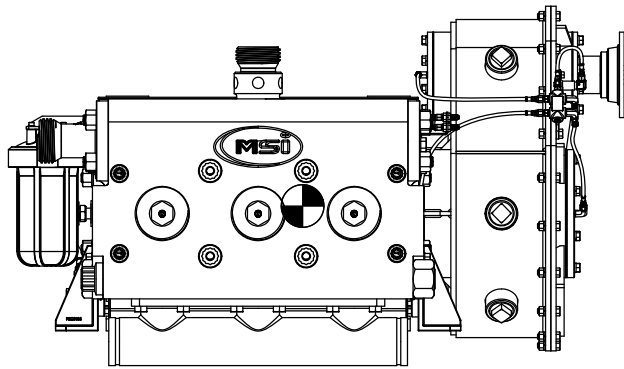
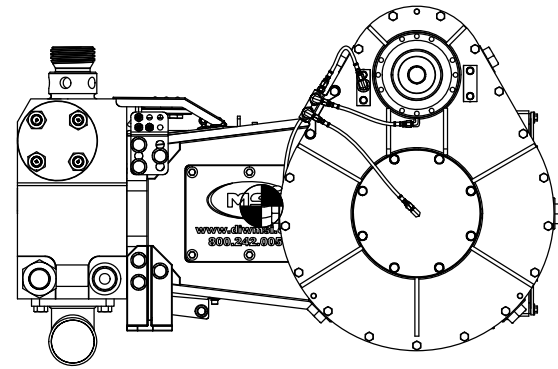
The TIH-600 is suited for acidizing, cementing, gravel packing, coil tubing and well stimulation.

All pumps are manufactured under MSI's ISO 9001 quality program established in 1993





PUMP DIMENSIONS

	1	2	3	4	5	6	7	8
A	 <p>14" FROM CRANKSHAFT \varnothing</p> <p>5" FROM CENTER CYLINDER \varnothing</p>							
B								
C								
D								
E								
F								
G								
CG IS APPROXIMATE FOR COMMON CONFIGURATIONS FOR EITHER THE TRIPLEX OR QUINTUPLEX PUMP, DIFFERENT GEAR POSITIONS AND PLUNGER SIZES WILL MOVE THE CG SLIGHTLY								