



Quality Network Solutions for **Professionals** *High-Performance Cables & Accessories for Global Markets*





LINKOMM – Quality Network Solutions for Professionals

LINKOMM is a Taiwanese brand specializing in high-quality network cabling and accessories.

With over 30 years of experience in production and strict compliance with international standards (TIA/EIA, ISO/IEC, EN, UL, REACH, RoHS), **LINKOMM** delivers reliable, high-performance network solutions for enterprises, professional installers, and global markets.

Our production units are ISO9001 and ISO12000 certified, ensuring consistent quality, safety, and performance. **LINKOMM**'s core values include innovation, professional service, and dedication to excellence in networking solutions.



Products Overview

A complete range of high-quality network cabling, accessories, and professional installation tools.

1. Network Cables

High-performance network cables including Cat.5e, Cat.6, Cat.6A, and Cat.8, designed for reliable, fast, and PoE-ready connections in enterprise and professional environments.

2. Wiring Accessories

Wide range of keystone jacks, faceplates, patch panels, and other cabling accessories, ensuring stable connections and organized network installations.

3. Tools

Professional crimping tools, punch-down tools, and testers that support efficient installation and maintenance of network systems.

4. Fiber Optic Systems

Fiber optic patch cords, connectors, and related accessories for high-speed data transmission and modern network infrastructure.





Cat.8 High-Speed Network Cable

Cat.8 cable offers ultimate speed and reliability with 40Gbps performance and GHMT-certified quality—ideal for data centers, enterprises, and high-performance home networks.

40Gbps Transmission – Supports ultra-high data rates for data centers and advanced networking environments.

Double Shielded Design – Excellent protection against EMI and crosstalk, ensuring stable and reliable performance.

PoE Ready – Compatible with Power over Ethernet applications, delivering both power and data.

Certified Quality – Meets ISO/IEC and TIA/EIA standards, fully FLUKE tested, and GHMT certified for proven reliability.





Cat.6A High-Performance Network Cables

Delivering 10G performance with versatile options: flexible stranded patch cords for patching and shorter runs, or solid double-shielded bulk cable for long distance and industrial installations.

Two Key Cat.6A Specifications

26 AWG Stranded S/FTP Patch Cord

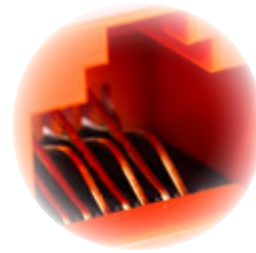
Great flexibility, suitable for patching, short runs, and high-density setups. Fully shielded per pair, with LSOH jacket; supports PoE and up to 30 meters with excellent performance.

LINKCOMM

23 AWG Solid S/FTP Bulk Cable

Designed for long cable runs or more demanding environments. Offers double-shielding (foil plus braided), thicker conductor for better signal integrity over distance (up to 100m), still supports 10G and PoE standards.





KJU01 Slim Profile Keystone Jack (90° UTP)

Compact design, durable contact, and great flexibility – perfect for Cat.6A, Cat.6 or Cat.5e installations in high-density wall plates and panels.

90° Slim Profile Design – Ideal for tight spaces like 3-port and 6-port faceplates, or densely packed patch panels.

Versatile Wiring Support – Compatible with 23-26 AWG solid or stranded wires.

High-Quality Contacts – Nickel plating plus 50µin gold plating on plug contacts for low loss and stable performance.

Safety & Durability – ABS + PC shell (UL 94V-0 rated); robust materials suitable for professional installations.



Toolless Keystone Jacks

Quick installation, reliable performance, and professional shielding – LINKOMM's toolless keystone jacks ensure seamless Cat.6A and Cat.8 network connections.



KJS026A88MT

Cat.6A 180° STP Toolless Keystone Jack

180° Design

Straight-through layout suitable for standard wall plates and patch panels.

Shielded STP Construction

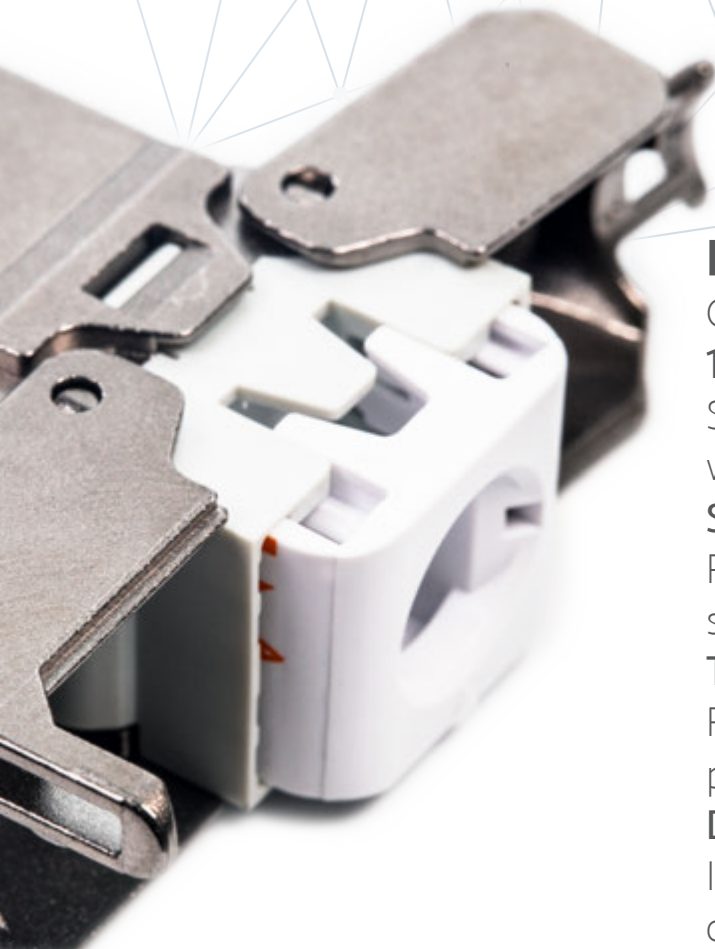
Protects against EMI/RFI interference for stable 10G performance.

Toolless Termination

Fast and reliable installation without punch-down tools.

Dust-Proof Design

Integrated dust cover ensures contacts remain clean and durable.



KJS04C888MT

Cat.8 180° STP Toolless Keystone Jack

180° Design

Supports high-density setups with minimal space.

High-Speed Performance

Supports 10G, 25G, 40GBASE-T applications.

Shielded Metal Housing

Excellent protection and durability.

Toolless Termination

Fast and reliable installation, no special tools needed.





1U 19" RJ45 24-Port STP Shielded Blank Keystone Patch Panel

Shielded, high-density patch panel for reliable 10/25/40G network performance and organized rack installation.

Shielded STP Construction

Designed to minimize electromagnetic interference (EMI), ensuring stable and high-performance network connections.

Versatile Compatibility

Compatible with standard snap-in keystone jacks, allowing for flexible configurations tailored to data, voice, video, or fiber optic applications.

Durable Build

Constructed from 1.5mm thick black-coated SPCC steel, offering robust durability for demanding environments.

Rear Cable Management Support

Equipped with a rear cable support bar to prevent over-bending, ensuring organized and safe cable routing.



1U 19" RJ45 24-Port Cat.6 / Cat.5e Patch Panel

Versatile patch panel compatible with Cat.6 and Cat.5e, offering cost-effective performance and simplified cable management for standard office and enterprise networks.

Universal Compatibility – Supports Cat.6 and Cat.5e keystone jacks.

Cost-Effective Solution – Perfect for standard office and enterprise use.

Durable Construction – Sturdy steel frame ensures reliability.

Easy Management – Numbered ports for efficient organization.



Cat.8 Shielded Toolless Modular Plug

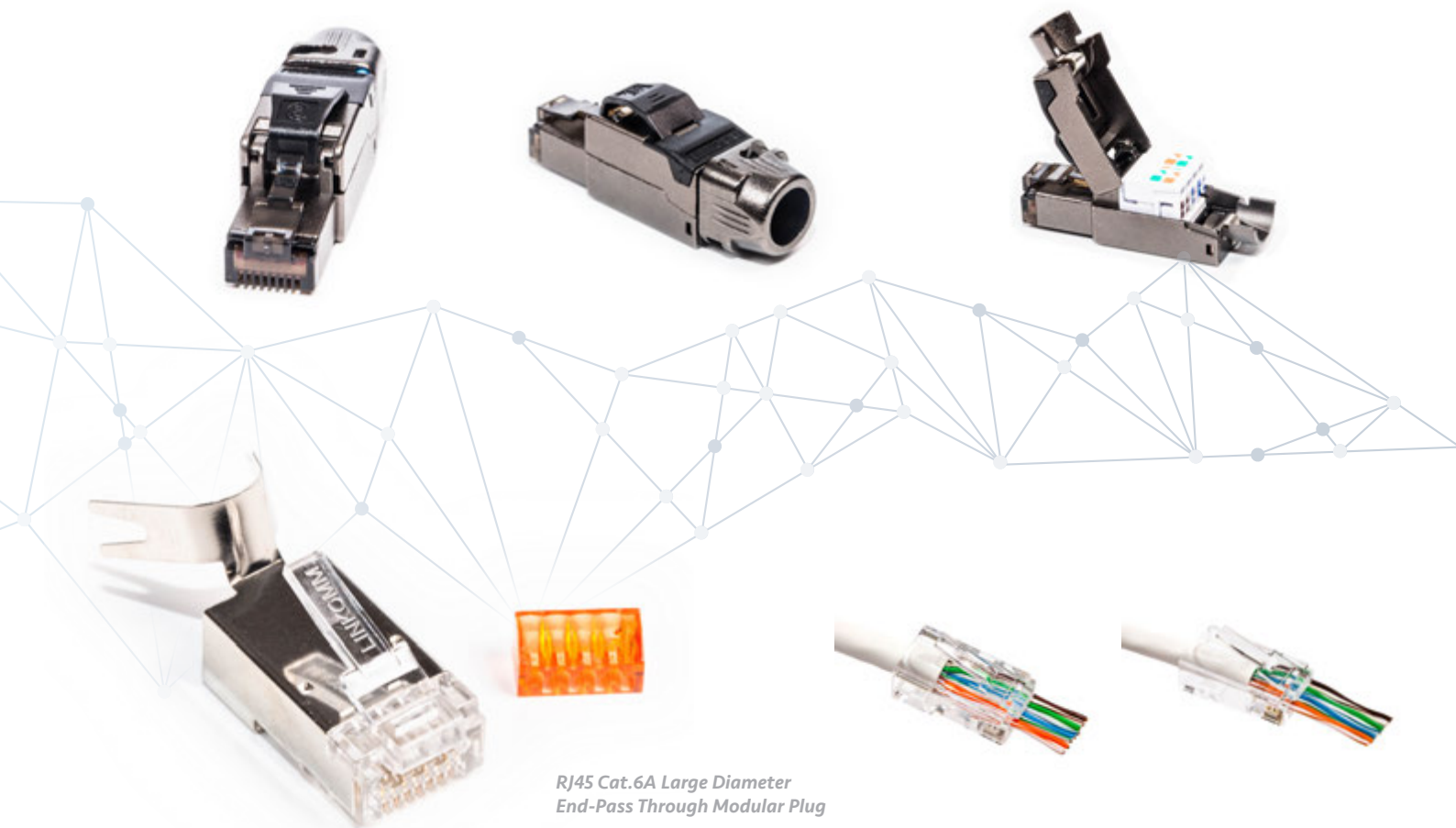
Engineered for reliability, LINKOMM Cat.8 modular plugs deliver superior performance for the most demanding environments.

Premium Performance – Designed for 25G/40G Ethernet applications.

Toolless Termination – No crimping required, quick and precise assembly.

Shielded Design – Protects against EMI/RFI.

Professional Use – Perfect for high-speed networks.



*RJ45 Cat.6A Large Diameter
End-Pass Through Modular Plug*

Pass-Through Modular Plugs

LINKOMM pass-through plugs combine ease of use with solid performance, making them the go-to choice for standard cabling needs.

Affordable & Practical – For Cat.5e / Cat.6 / Cat.6A cabling.

Pass-Through Design – Easy cable alignment and termination, reducing errors.

Wide Usage – Popular in office networks, SMB installations, and everyday cabling projects.



Professional Network Installation Tools

LINKOMM tools are designed for speed, accuracy, and reliable terminations, helping installers complete projects efficiently and with consistent quality.

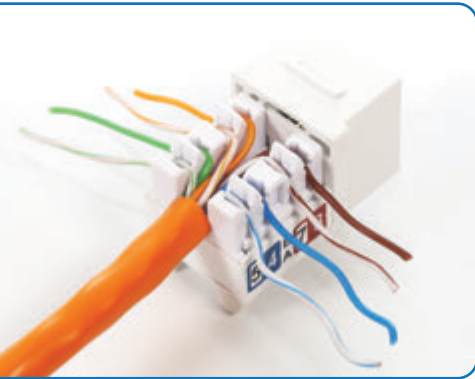
TLPD04 – One-Punch Keystone Jack Termination Tool

Fast & Accurate – Tool for Cat.5e / Cat.6 / Cat.6A keystone jacks.

Professional Efficiency – Speeds up termination in wall plates and patch panels.

Comfortable Handling – Lightweight design reduces installer fatigue.

1



2



TLCR01 – High-End Modular Crimping Tool

Multi-Function Crimping

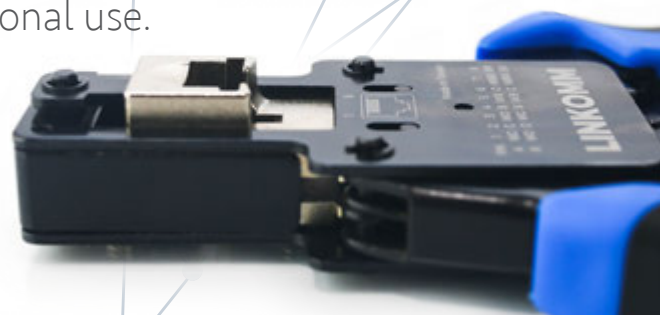
Works with Cat.5e / Cat.6 / Cat.6A plugs.

Precision & Durability

Ensures reliable terminations every time.

Ergonomic Design

Comfortable grip for professional use.





Get in Touch with LINKOMM

*Providing professional network solutions worldwide.
Contact us for inquiries, orders, or technical support.*

Website : www.linkomm.com

Email: sales@linkomm.com

Phone: +886-2-2989-1858

Social Media:

Facebook: [@linkommtw](https://www.facebook.com/linkommtw)

LinkedIn: [@linkommtw](https://www.linkedin.com/company/linkommtw)

YouTube: [@linkommtw](https://www.youtube.com/channel/UC...)

Scan the QR code to access our full product.

