

2024 Products Catalog



KJU01C386WH

RJ11 Cat.3 8P6C Telephone Keystone Connector Module

- * RJ11 Cat.3 8P6C Telephone Keystone Jack
- * 50μ" gold plated contacts provides a great quality of data transmission
- * IDC high strength of wire column which is with phosphor bronze pins support crimping up to many times
- * Suitable for any equipment with RJ11 connectors
- * Suitable for One-Punch Keystone Jack Termination Tool(SKU:TLPD04)



KJU015E88XX

RJ45 Cat.5e 90° Slim Profile UTP Unshielded Keystone Jack

- *90-degree punch-down installation snap-in Cat.5e RJ45 keystone jack
- *Small size best for 3-port and 6-port high-density wall plates and patch panels
- *Wire IDC suitable for 23 to 26AWG solid and stranded wires
- *Nickel-plate plug contacts with 50u" gold-plated for low-loss data transmission Pointed wire IDC for fast and easy separating color-coded wires installation
- * Suitable for One-Punch Keystone Jack Termination Tool(SKU:TLPD04)



KJU01C688XX

RJ45 Cat.6 90° Slim Profile UTP Unshielded Keystone Jack

- *90-degree punch-down installation snap-in Cat.6 RJ45 keystone jack
- *Small size best for 3-port and 6-port high-density wall plates and patch panels
- *Wire IDC suitable for 23 to 26AWG solid and stranded wires
- *Nickel-plate plug contacts with 50u" gold-plated for low-loss data transmission Pointed wire IDC for fast and easy separating color-coded wires installation
- * Suitable for One-Punch Keystone Jack Termination Tool(SKU:TLPD04)



KJU016A88XX

RJ45 Cat.6A 90° Slim Profile UTP Unshielded Keystone Jack

- *90-degree punch-down installation snap-in Cat.6A RJ45 keystone jack
- *Small size best for 3-port and 6-port high-density wall plates and patch panels
- *Wire IDC suitable for 23 to 26AWG solid and stranded wires
- *Nickel-plate plug contacts with 50u" gold-plated for low-loss data transmission Pointed wire IDC for fast and easy separating color-coded wires installation
- * Suitable for One-Punch Keystone Jack Termination Tool(SKU:TLPD04)



KJU02C688WH

RJ45 Cat.6 Tool-Free UTP Unshielded Keystone Jack with Shutter Dust Cover

- *Easy to snap-in Cat.6/Cat. 6A RJ45 keystone jack with no punch-down tool needed
- *Cat. 6 network jack supports 1GBASE-T network systems, surveillance cameras, VoIP phone systems, wireless access points and other PoE devices; PoE (Power over Ethernet) jack prevents spark-gap erosion that degrades data and power transmission
- *Shutter and dust cap protects the jack from dust and other contaminants when not in use



KJU026A88WH

RJ45 Cat.6A Tool-Free UTP Unshielded Keystone Jack with Shutter Dust Cover

- *Easy to snap-in Cat.6/Cat. 6A RJ45 keystone jack with no punch-down tool needed
- *Cat. 6A network jack supports 10 GBASE-T network systems, surveillance cameras, VoIP phone systems, wireless access points and other PoE devices; PoE (Power over Ethernet) jack prevents spark-gap erosion that degrades data and power transmission
- *Shutter and dust cap protects the jack from dust and other contaminants when not in use



KJS036A88MT

RJ45 Cat.6A 90° STP Metal Shielded Keystone Jack

- *Ideal keystone jacks for patch panels, surface mount boxes or wall plates face plates with standard keystone ports
- *Zinc metal die-casting housing efficiently protect data transmissions from potential crosstalk
- *Dual type IDC modules for 110 and KRONE impact punch-down tool; suitable for 23 to 26 AWG solid or stranded cable wires
- *Compatible with PoE Type III 60W and Type IV 100W
- * Suitable for One-Punch Keystone Jack Termination Tool(SKU:TLPD04)



KJS04C888MT

RJ45 Cat.8 180° STP Tool-free Shielded Keystone Jack

- *Support Cat. 8 data transmitting frequency up to 2000MHz
- *Zinc die-casting STP shielded housing efficiently protects data transmissions from potential crosstalk
- *Suitable for 22 to 24 AWG solid or stranded cables in diameter between 5.5 and 9.0mm
- *Support 10G, 25G and 40GBASE-T channel compliant network connection up to 30 meters
- *Compatible with PoE Type III 60W and Type IV 100W applications



ICU01C688BK

RJ45 Cat.6 UTP Unshielded Dual-head Inline Coupler Cable Extender

- *Lightweight and compact female to female Ethernet coupler
- *Compatible with Cat.5, Cat.5e, Cat.6 network cables
- *Compliant with TIA/EIA 568-C.2 Cat. 6 performance and RoHS compliant
- *Ideal for extending the length of network cables
- *Constructed of high-impact, fire-retardant, the best quality plastic and gold-plated contacts



ICU02C688BK

RJ45 Cat.6 UTP Unshielded Keystone Insert Inline Coupler

- *Ideal for extending the length of network cables
- *Keystone jack type Ethernet inline coupler; compatible with keystone patch panel and wall plate
- *Lightweight and compact female to female Ethernet coupler
- *Compatible with Cat.5, Cat.5e and Cat.6 network cables



ICS026A88MT

RJ45 Cat.6A STP Shielded Keystone Feed Through inline Coupler

- *Cat. 6A data transmitting performance; ideal for extending the length of network cables
- *Keystone jack type Ethernet in-line coupler compatible with keystone patch panel and wall plate; shielded housing efficiently protect data transmissions from potential crosstalk
- *50 micron-inch gold-plated on contact area for avoiding potential metal oxidation
- *Lightweight and compact female to female Ethernet coupler



MPU01C364TR

RJ11 6P4C Telephone Modular Plug

- *Jacket: Polycarbonate
- *Gold plating: 50 micro-inch gold plating over nickel plating on contact area



MPU015E88TR

RJ45 Cat.5e UTP Unshielded Modular Plug

- *Housing: Polycarbonate, UL94V-2, Transparent color
- *Contact Terminal: Phosphor Bronze
- *Contact Finished: 50 micron-inch gold-plating
- *Conductor diameter: 0.6 ± 0.05 mm



MPU01C688TR

RJ45 Cat.6 UTP Unshielded Modular Plug

- *Housing: Polycarbonate, UL94V-2, Transparent color
- *Contact Terminal: Phosphor Bronze
- *Contact Finished: 50 micron-inch gold-plating
- *Conductor diameter: 0.6 ± 0.05 mm
- *Load Bar: Yes



MPS016A88MT

RJ45 Cat.6A STP Ethernet Shielded Modular Plug

- *Plug Housing: Polycarbonate, UL94V-2, Transparent color
- *Contact Terminal: Phosphor Bronze
- *Shielded Material: Brass with nickel plated
- *Gold plating: 50 micro-inch gold plating over nickel plating on contact area
- *Conductor diameter: 0.6 ± 0.05 mm
- *Load bar: Yes



MPU025E88TR

RJ45 Cat.5e End-Pass-Through UTP Unshielded Modular Plug

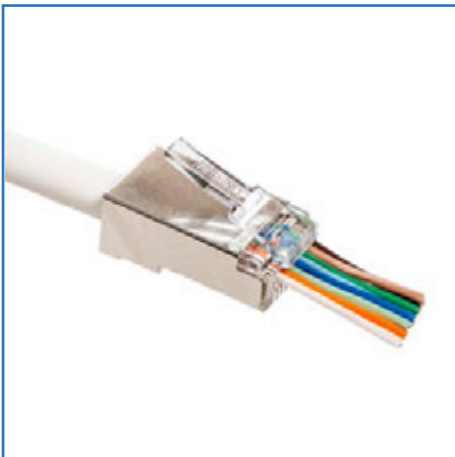
- *Plug Housing: Polycarbonate, UL94V-2, Transparent color
- *Contact Terminal: Phosphor Bronze
- *Gold plating: 50 micro-inch gold plating over nickel plating on contact area
- *Conductor diameter: $0.6 \pm 0.05\text{mm}$



MPU02C688TR

RJ45 Cat6 End-Pass-Through UTP Unshielded Modular Plug

- *Plug Housing: Polycarbonate, UL94V-2, Transparent color
- *Contact Terminal: Phosphor Bronze
- *Gold plating: 50 micro-inch gold plating over nickel plating on contact area
- *Conductor diameter: $0.6 \pm 0.05\text{mm}$



MPS026A88MT

RJ45 Cat.6A Metal-Shielded End-Pass Through Modular Plugs

- *Plug Housing: Polycarbonate
- *Shield: Brass with nickel plated
- *Gold plating: 50 micro-inch gold plating over nickel plating on contact area
- *Conductor diameter: $0.6 \pm 0.05\text{mm}$
- *Load bar: No



MPS036A88MT

RJ45 Cat.6A Large Diameter End-Pass Through Modular Plug

- *Plug Housing: Polycarbonate
- *Shielded Copper Sheet: Brass with nickel plated
- *Gold plating: 50 micro-inch pure gold plating over nickel plating on contact area
- *Wire Gauge Supported: 23AWG (Conductor diameter: $1.35 \pm 0.05\text{mm}$)
- *Loading bar: Yes ($1.51 \pm 0.10\text{mm}$)
- *Dovetail: Yes



SR0165TR

Cat. 5e Boot

*Suitable for MPU015E88TR/ MPU025E88TR

*Material: PC

*O.D.:6.5mm



SR0265TR

Cat. 6 Boot

*Suitable for MPU01C688TR/ MPS016A88MT/MPU02C688TR/
MPS026A88MT

*Material: PC

*O.D.:6.5mm



SR0365XX

O.D.6.5mm Multicolor Ethernet Cable Boot/Strain Relief

*O.D.:6.5mm, are suitable for Cat. 5e/Cat. 6/Cat. 6A which cord diameter is under 6.5mm

*Don't need other tools to crimp the boot

*Material: PVC



SR0480XX

O.D.8mm Large diameter Ethernet Cable Boot/Strain Relief

*O.D.:8mm, are suitable for Cat. 5e/Cat. 6/Cat. 6A which cord diameter is under 8mm

*Don't need other tools to crimp the boot

*Material: PVC



FPS01 6A88MT

RJ45 Cat.6 Tool-Free Modular Plug / Termination Plug Connector

- *RJ45 Cat.6 Tool-Free Modular Plug / Termination Plug Connector
- *Superior one-piece die-cast fast field installation RJ45 plug protects data transmission from crosstalk
- *With wire load bar, RJ45 plug installation becomes easier and faster
- *Suitable for 23 to 26 AWG stranded UTP cables
- *Compatible with PoE Type III 60W and Type IV 100W applications



FPS01 6A88MT

RJ45 Cat.6A Tool-Free STP Modular Plug / Termination Plug Connector

- *Superior one-piece die-cast fast field installation RJ45 plug protect data transmission from crosstalk
- *With wire load bar, RJ45 plug installation becomes easier and faster
- *Suitable for 23 to 26 AWG (Cat.6A) solid or stranded STP cables
- *Screw-on metal strain relief boot protect the cable from over-bending and increase EMI shielding performance
- *Compatible with PoE Type III 60W and Type IV 100W applications



FPS01 C888MT

RJ45 Cat.8 Tool-Free STP Modular Plug / Termination Plug Connector

- *Superior one-piece die-cast fast field installation RJ45 plug protect data transmission from crosstalk
- *With wire load bar, RJ45 plug installation becomes easier and faster
- *Suitable for 22 to 24 AWG (Cat.8) solid or stranded STP cables
- *Screw-on metal strain relief boot protect the cable from over-bending and increase EMI shielding performance
- *Compatible with PoE Type III 60W and Type IV 100W applications



PPS0412BK

10inch 12-Port STP Shielded Blank Keystone Patch Panel

- *Panel:SPCC, 1.5mm thickness with Black (RAL 9005) color painted
- *Panel Bracket: ABS, UL 94V-0
- *Size: 254mm x 43.6mm x 62mm



PPU0312C6BK

10inch Cat 6 12-Port UTP Unshielded Keystone Patch Panel

- * Front panel: SPCC, 1.5mm thickness with black(RAL 9005) color painted
- * Jack housing: ABS+PC, UL94V-0
- * Contact pin bracket: PC, UL94V-2 8-pin
- * Jack contact pin: Phosphor Bronze with Nickel plated
- * Finish: 50 micro-inch gold plated on plug contact area
- * IDC housing: PC and glass Fiber, UL 94V-0
- * IDC terminal: Phosphor bronze with tin plated



PPU011U245EBK

1U 19inch RJ45 Cat.5e 24-Port UTP Unshielded Patch Panel

- * Front panel: SPCC, 1.5mm thickness with black(RAL 9005) color painted
- * Jack housing: ABS+PC, UL94V-0
- * Contact pin bracket: PC, UL94V-2
- * Jack contact pin: Phosphor Bronze with Nickel plated
- * Finish: 50 micro-inch gold plated on plug contact area
- * IDC housing: PC and glass Fiber, UL 94V-0
- * IDC terminal: Phosphor bronze with tin plated



PPU011U24C6BK

1U 19inch RJ45 Cat.6 24-Port UTP Unshielded Patch Panel

- * Front panel: SPCC, 1.5mm thickness with black(RAL 9005) color painted
- * Jack housing: ABS+PC, UL94V-0
- * Contact pin bracket: PC, UL94V-2
- * Jack contact pin: Phosphor Bronze with Nickel plated
- * Finish: 50 micro-inch gold plated on plug contact area
- * IDC housing: PC and glass Fiber, UL 94V-0
- * IDC terminal: Phosphor bronze with tin plated



PPU051U24BK

1U 19inch RJ45 24-Port Blank Patch V Panel

- * Material: SPCC, T:1.5mm
- * Keystone Jack: ABS, UL 94V-0
- * Patch V(V-type)Panel provides more convenient cable management, reduction of cable over-bending
- * UTP unshielded patch panel for 19" wall-mount or rack-mount racks, brackets, and cabinets



PPU021U24BK

1U 19inch RJ45 24-Port UTP Unshielded Blank Keystone Patch Panel

- *Panel: SPCC, 1.5mm thickness with black color painted
- *Support bar: SPCC, 1.5mm thickness with black color painted
- *Jack housing: ABS+PC, UL94V-0
- *Contact bracket: PC, UL94V-2



PPS021U24BK

1U 19inch RJ45 24-Port STP Shielded Blank Keystone Patch Panel

- *Panel: SPCC, 1.5mm thickness with black color painted
- *Support bar: SPCC, 1.5mm thickness with black color painted
- *Jack housing: ABS+PC, UL94V-0
- *Base case: SPCC, 1.5mm thickness with 8μm nickel plated
- *Ground wire: 18AWG wire, with green/yellow striped color, length 15 inches



CM01BK

1U 19inch RJ45 D-Ring Rack Mount Cable Management

*Panel: SPCC, 1.5mm thickness with black color painted

*D-Ring Hook: ABS, UL94-HB, Black color



CM02BK

1U 19inch Brush Strip Mount Cable Management

* Panel: SPCC, 1.5mm thickness with black color painted

*Brush Strip: dense nylon



CM03BK

1U 19inch Blank Spacer Rack Mount Cable Management

*Panel: SPCC, 1.5mm thickness with black color painted



CM05BK

1U 19inch RJ45 Rack Mount Cable Management

*Panel: SPCC, 1.5mm thickness with black color painted

*Size: L 482.6 x W 46.9 x H 44.7mm



CM06BK

1U 19inch RJ45 Rack Mount Cable Management

*Panel: SPCC, 1.5mm thickness with black color painted

*Size: L 482.6 x W 46.9 x H 88.2mm



CM04BK

1U 19inch Vented Cantilever Fixed Shelf

*Panel: SPCC 1.5mm thickness with black color painting

*Size: 482mm x 254mm x 43.5mm



CM07BK

2U 19inch Vented Cantilever Fixed Shelf

*Panel: SPCC 1.5mm thickness with black color painting

*Size: 482mm x 381mm x 88mm



MU24AC6XXXXGY

Cat.6 1G Stranded Ethernet Molded Boot Patch Cord U/UTP 24AWG

- *Cable Diameter: 24AWG 5.6±0.2mm
- *Conductors: Oxygen-Free pure bare Copper(7 x 0.192mm)
- *Conductor Insulation: HDPE
- *Jacket: PVC
- *Contact Material: Phosphor Bronze , 50μ" Gold-plated
- *Contact Type: 3-prong for solid/stranded conductors
- *Supported Data Rate: 1000(1G)Base-T



U28AC6XXXXBL

Cat.6 1G Slim Stranded Ethernet Patch Cord U/UTP 28AWG

- *Cable Diameter: 28AWG 3.8mm±0.2mm
- *Conductors: Oxygen-Free pure bare Copper (7 x 0.127mm)
- *Conductor Insulation: HDPE
- *Jacket: PVC
- *Contact Material: Phosphor Bronze, 50μ" Gold-plated
- *Contact Type: 3-prong for solid/stranded conductors
- *Supported Data Rate: 1000(1G)Base-T



U24AC6XXXXPU

Cat.6 1G Solid Ethernet Patch Cord U/UTP 24AWG

- *Cable Diameter: 24AWG 5.6±0.2mm
- *Conductors: Solid, Oxygen-Free pure bare Copper
- *Conductor Insulation: HDPE
- *Jacket: PVC
- *Contact Material: Phosphor Bronze, 50μ" Gold-plated
- *Contact Type: 3-prong for solid/stranded conductors
- *Supported Data Rate: 1000(1G)Base-T



S26A6AXXXBKBK

Cat.6A 10G Shielded Stranded Ethernet Patch Cord U/FTP 26AWG

- *Cable Diameter: 26AWG(7 x 0.152±0.1mm)
- Conductors: Stranded, Oxygen-Free pure bare Copper
- Conductor Insulation: Skinned Foam PE
- Cable Jacket: LSOH
- Foil Screen: Aluminum/PET on each pair
- Plug: Metal material Shielded
- Contact Pins: 3-prong
- Supported Data Rate: 10GBase-T



S22AC8XXXXGY

Cat.8 40G High Speed Solid Ethernet Patch Cord S/FTP 22AWG

- *Cable Diameter: 22AWG 7.4mm±0.2mm
- *Cable Jacket:LSOH
- *Conductors: Bare copper(22AWG)
- *Insulation: Foam PE
- *Braid: Tin plated copper
- *Foil screen: Aluminum/PET on each pair
- *Supported Data Rate: 40GBase-T



S26A6AMFXXXXBK

Cat.6A 10G Double Shielded Stranded Male to Female Ethernet Extended Cord

- *Cable Diameter: 26AWG(7 x 0.152±0.1mm)
- *Conductors: Stranded, Oxygen-Free pure bare Copper
- *Conductor Insulation: Skinned Foam PE
- *Cable Jacket: LSOH
- *Braid: Tinned copper-clad steel, min, 30% coverage
- *Foil Screen: Aluminum/PET on each pair
- *Plug: Metal material Shielded
- *Contact Pins: 3-prong
- *Supported Data Rate: 10GBase-T



U5E24A305MPVBL

Cat.5e Unshielded UTP Bulk Ethernet Cable

- * Cable Diameter: 24AWG 5.1±0.2mm
- * Conductors: Solid, Oxygen-Free pure bare Copper
- * Conductor Insulation: HDPE (0.91mm)
- * Jacket: PVC (0.50mm)
- * Supported Data Rate: 100Mbps
- * Supported Bandwidth: 100MHz
- * Operating Temperature: -10°C to +75°C



UC623A100MPEBK

Cat.6 Outdoor Bulk Solid Ethernet Cable U/UTP 23AWG

- * Cable Diameter: 23AWG 5.5±0.2mm
- * Conductors: Solid, Oxygen-Free pure bare Copper
- * Conductor Insulation: HDPE
- * Jacket: PE
- * Supported Data Rate: 1000Mbps
- * Supported Bandwidth: 250MHz
- * Operating Temperature: -10°C to +75°C



UC624A305MCMWH

Cat.6 Unshielded Solid Bulk Ethernet Cable U/UTP 24AWG

- * Cable Diameter: 24AWG 5.6±0.2mm
- * Conductors: Solid, Oxygen-Free pure bare Copper
- * Conductor Insulation: HDPE
- * Jacket: PVC
- * Supported Data Rate: 1000(1G)Base-T
- * Supported Bandwidth: 250MHz
- * Operating Temperature: -10°C to +75°C



S6A26A305MZHYL

Cat.6A 10G Stranded Shielded Ethernet Cable S/FTP 26AWG

- * Cable Diameter: 26AWG(7 x 0.152±0.1mm)
- * Conductors: Stranded, Oxygen-Free pure bare Copper
- * Conductor Insulation: Skinned Foam PE
- * Cable Jacket: LSOH
- * Foil screen: Aluminum/ PET on each pair
- * Supported Data Rate: 10GBase-T
- * Supported Bandwidth: 550MHz
- * Operating Temperature: 10°C to +75°C



S6A23A305MZHBL

Cat.6A 10G Double Shielded Solid Ethernet Patch Cable S/FTP 23AWG

- *Cable Diameter: 23AWG(1 x 0.56±0.1mm)
- *Conductors: Solid, Oxygen-Free pure bare Copper
- *Conductor Insulation: Skinned Foam PE
- *Cable Jacket: LSOH, (7.3±0.2mm)
- *Braid: Tinned copper-clad steel, min, 30% coverage
- *Foil screen: Aluminum/ PET on each pair
- *Supported Data Rate: 10GBase-T
- *Supported Bandwidth: 550MHz
- *Operating Temperature: -10°C to +75°C



SC822A305MZHGY

Cat.8 40G High Speed Solid Bulk Ethernet Patch Cable S/FTP 22AWG

- *Cable Diameter: 22AWG(1 x 0.64±0.1mm)
- *Conductors: Solid, Oxygen-Free pure bare Copper
- *Conductor Insulation: Skinned Foam PE
- *Conductor Type: Solid Pure Bare Copper
- *Cable Jacket: LSOH, (8.4±0.2mm)
- *Braid: Tinned copper-clad steel, min, 30% coverage
- *Foil screen: Aluminum/ PET on each pair
- *Supported Data Rate: 40GBase-T
- *Supported Bandwidth: 2000MHz
- *Operating Temperature: -10°C to +75°C



ADSC-SCSXOS2FL

Fiber Optic Coupler With Flange(Single-mode) SC to SC

- *Fiber Mode:Single-mode
- *Color: Blue
- *Connector Type: SC to SC
- *Body Style: Simplex
- *Alignment Sleeve Material: Ceramic
- *Mounting Type: With Full Flange



ADLC-LCDXOS2FL

Fiber Optic Coupler With Flange(Single-mode) LC to LC

- *Fiber Mode:Single-mode
- *Color: Blue
- *Connector Type: LC to LC
- *Body Style: Simplex
- *Alignment Sleeve Material: Ceramic
- *Mounting Type: With Full Flange



ADSC-SCSXOM3FL

Fiber Optic Coupler With Flange(Multimode) SC to SC

- *Fiber Mode:Multimode
- *Color: Aqua
- *Connector Type:SC to SC
- *Body Style: Duplex
- *Alignment Sleeve Material: Ceramic
- *Mounting Type: With Full Flange



ADLC-LCDXOM3FL

Fiber Optic Coupler With Flange(Multimode) LC to LC

- *Fiber Mode:Multimode
- *Color: Aqua
- *Connector Type:LC to LC
- *Body Style: Duplex
- *Alignment Sleeve Material: Ceramic
- *Mounting Type: With Full Flange



FPPSCSM1UBK

1U 19" 12 core Single-mode, SC Fiber Optic Cassette

*Dimensions(H*W*D): 43.65mm*482.6mm(1U)*255mm

*Material: SECC&SPCC 1.2mm

*Material of Sleeve: Zirconia Ceramic

*Weight: 3.3kg



FPPLCSM1UBK

1U 19" 24 core Single-mode, LC Fiber Optic Cassette

*Dimensions(H*W*D): 43.65mm*482.6mm(1U)*255mm

*Material: SECC&SPCC 1.2mm

*Material of Sleeve: Zirconia Ceramic

*Weight: 3.3kg



FPPSCMM1UBK

1U 19" 12 core Multimode, SC Fiber Optic Cassette

*Dimensions(H*W*D): 43.65mm*482.6mm(1U)*255mm

*Material: SECC&SPCC 1.2mm

*Material of Sleeve: Zirconia Ceramic

*Weight: 3.3kg



FPPLCMM1UBK

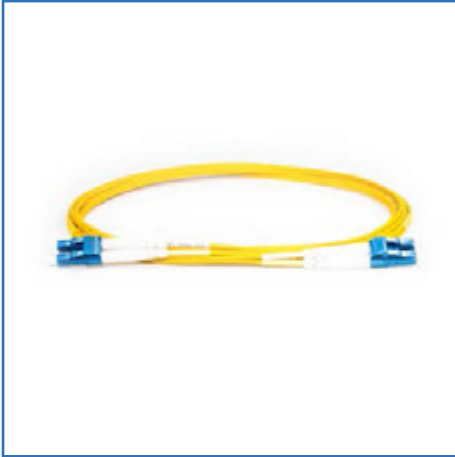
1U 19" 24 core Multimode, LC Fiber Optic Cassette

*Dimensions(H*W*D): 43.65mm*482.6mm(1U)*255mm

*Material: SECC&SPCC 1.2mm

*Material of Sleeve: Zirconia Ceramic

*Weight: 3.3kg



OS2LC-LCDX

OS2 Duplex Single-mode LSOH Fiber Optic Patch Cord

- *Cable Diameter: 2.0mm
- *Cable Jacket: LSZH
- *Length: 1m ~ 20m
- *Fiber Count: Duplex
- *Connector Type: LC to LC
- *Fiber type: OS2(yellow)
- *Ferrule material: Zirconia Ceramic
- *Insertion Loss: $\leq 0.3\text{dB}$ *Return Loss: $\geq 30\text{dB}$



OM3LC-LCDX

OM3 Duplex Multimode LSOH Fiber Optic Patch Cord

- *Cable Diameter: 2.0mm
- *Cable Jacket: LSZH
- *Length: 1m ~ 20m
- *Fiber Count: Duplex
- *Connector Type: LC to LC
- *Fiber type: OM3(aqua)
- *Ferrule material: Zirconia Ceramic
- *Insertion Loss: $\leq 0.3\text{dB}$ *Return Loss: $\geq 30\text{dB}$



OM4LC-LCDX

OM4 Duplex Multimode LSOH Fiber Optic Patch Cord

- *Cable Diameter: 2.0mm
- *Cable Jacket: LSZH
- *Length: 1m ~ 20m
- *Fiber Count: Duplex
- *Connector Type: LC to LC
- *Fiber type: OM4(violet)
- *Ferrule material: Zirconia Ceramic
- *Insertion Loss: $\leq 0.3\text{dB}$ *Return Loss: $\geq 30\text{dB}$



OM5LC-LCDX

OM5 Duplex Multimode LSOH Fiber Optic Patch Cord

- *Cable Diameter: 2.0mm
- *Cable Jacket: LSZH
- *Length: 1m ~ 20m
- *Fiber Count: Duplex
- *Connector Type: LC to LC
- *Fiber type: OM5(lime green)
- *Ferrule material: Zirconia Ceramic
- *Insertion Loss: $\leq 0.3\text{dB}$ *Return Loss: $\geq 30\text{dB}$



OS2SCPT001M

Pigtail SC Single-mode

- *Cable O.D.: 0.9mm
- *Cable Jacket: LSZH
- *Length: 1m
- *Fiber type: OS2(yellow)
- *Connector type: SC
- *Polishing type: SC/UPC
- *Ferrule material: Zirconia Ceramic
- *Insertion Loss: $\leq 0.3\text{dB}$ *Return Loss: $\geq 30\text{dB}$



OS2LCPT001M

Pigtail LC Single-mode

- *Cable O.D.: 0.9mm
- *Cable Jacket: LSZH
- *Length: 1m
- *Fiber type: OS2(yellow)
- *Connector type: LC
- *Polishing type: LC/UPC
- *Ferrule material: Zirconia Ceramic
- *Insertion Loss: $\leq 0.3\text{dB}$ *Return Loss: $\geq 30\text{dB}$



OM3SCPT001M

Pigtail SC Multimode

- *Cable O.D.: 0.9mm
- *Cable Jacket: LSZH
- *Length: 1m
- *Fiber type: OM3(aqua)
- *Connector type: SC
- *Polishing type: SC/UPC
- *Ferrule material: Zirconia Ceramic
- *Insertion Loss: $\leq 0.3\text{dB}$ *Return Loss: $\geq 30\text{dB}$



OM3LCPT001M

Pigtail LC Multimode

- *Cable O.D.: 0.9mm
- *Cable Jacket: LSZH
- *Length: 1m
- *Fiber type: OM3(aqua)
- *Connector type: LC
- *Polishing type: LC/UPC
- *Ferrule material: Zirconia Ceramic
- *Insertion Loss: $\leq 0.3\text{dB}$ *Return Loss: $\geq 30\text{dB}$



TLCR01

RJ45 End-Pass-Through Modular Plug Crimping Tool

- *Die casting plug die set for accurate and fast installation End-Pass-Through RJ45 plugs; ratcheted mechanism and high leverage give a laborsaving and timesaving advantage for wiring installation
- *Built-in blade trims and crimps on the extended wires with only one action to complete
- *Improve installation efficiency and save time; work with general RJ45 plugs as well
- *Blade wire trimming over 20,000 times life cycles



TLCR02

RJ45 All in One Data Cable Modular Plug Crimping Tool

- *Ideal plier for crimping 8P, 6P, 4P, RJ-45, RJ12, RJ11 telephone and Cat. 5e, Cat. 6, and Cat. 6A data plugs
- *Designed with a ratcheted mechanism, crimping tool provides a complete and convenient modular plug crimping
- *Prevents slippage during crimping; lightweight, durable, and compact
- *Built-in cable cutter and stripper; crimping with professional tool is more laborsaving and timesaving
- *Designed for precise installation of RJ45 plugs;



TLCR03

Portable TLCR03 End-Pass-Through Modular Plug Crimping Tool

- *With features such as compact in size and convenient operation, Portable
- *Crimping Tool weights only 246g
- *Portable Crimping Tool is used to crimp, strip and cut; convenient for installing cables
- *High Carbon Steel Blade is durable that you can use it crimping up to 2500 times



TLPD04

One-Punch Keystone Jack Termination Tool

- *Punches down and neatly cut 4 pairs of wires at the same time
- *With ergonomic grip for easy handling design, crimping keystone jacks become easier and faster
- *Termination tool with safety retaining-ring design
- *Suitable for LINKOMM Keystone Jacks such as KJU015E88/ KJU01C688/ KJU016A88/ KJS036A88MT/KJU01C386WH



TLCC01

Wire Flush Cutter Plier

- *Sharp and precise wire cutter, 11mm long harden carbon steel jaw with angled cutting head
- *Professional cutter for electrical work; suitable for trimming copper and soft wires up to 18AWG(1mm)
- *Durable, light-weight and compact; ideal size for working in small spaces and the opening spring can save force
- *Comfy grip and non-slip handle for comfortable operation



TLCC02

Cable Cutter, High Duty Cable Cutting

- *Made of high-carbon steel and processed with anti-rust cladding.
- *Cable Cutter is with high hardness, good toughness, sharp cutting, strong and durable.
- *Cutting neatly at one time, cable cutter can save the time and effort in the operation.



TLCR04

Multifunctional Auxiliary Parallel Crimping Plier

- *Designed for laborsaving advantage, multifunctional auxiliary crimping tool is the best helper in any process of wiring
- *Suitable for LINKOMM Cat. 8 Toolless Keystone Jack(KJS04C888MT), Cat. 6/8 Toolless Modular Plug(FMPS016A88BK/FMPS01C888BK), Cat. 6A Large Diameter End-Pass Through Modular Plug Dovetail(MPS036A88MT), UY, UG, UR



TLCB01XX

Cable Bundle Organizing Tool

- *Aids in saving a significant amount of time over conventional methods
- *Keep cables twist-free so that cables are great looking, easy-to-maintain cabling
- *Cable Bundle Organizing Tool can straighten up to 24 cables when creating bundles for cable dressing
- *Combining two Cable Bundle Organizing Tool together then can Straighten up to 48 Cables



TLPD01

Network Wire Impact Punch-Down Tool with 66, 110, and Krone Blades

- *Comfort grip easy to handle; insert and cut wire in one simple operation
- *Adjustable impact-force (LO and HI) for various cable termination applications
- *Hook, extractor tool and blade storage built into the handle
- *Includes 110, 66 and Krone blades; easy blade insertion twist and lock in place



TLPD02BK

Keystone Jack Punch-Down Termination Palm Holder

- *Safe and reliable punch-down keystone jack installing holder
- *Protect your hands from sharp impact punch-down tool
- *Place the keystone jack into the holder and stably punch down the wires
- *Work with general standard size and LINKOMM RJ45 keystone jacks A, B and C keystone jack positions; A for 180-degree wiring jack, B for 90-degree jack, and C for Australian type jack



TLST01

Ethernet Network Cable Adjustable Blade Stripping Tool

- *Handy network cable stripping tool with cutter
- *Adjustable round cable blade cutting depth for different thickness of cable jackets
- *Bouncy cable controller avoid damaging inner wire
- *Built-in durable high-carbon steel cutting blades
- *Light weight and compact; simple to use



TLCT01

RJ11, RJ12, RJ45 Telephone and Network Cable Tester

- *Comprehensive cable tester for network professionals, installers and users
- *Accurately verify cable connection status (open, short, miswire and ground connection)
- *Outstanding 8P8C connector for testing RJ45, RJ11, and RJ12 without contact pin damages
- *Test network patch cords or entire network system length up to 305m (1000 ft) for trouble shooting



TLPD03XX

Ethernet Network Mini Wire Stripper and 110 Blade Punch Down Tool

- *Mini wire strippers designed in pocket size; small and convenient to carry
- *Sharp blade and a finger loop that provides a secure hold
- *Suitable for a variety of wire diameters of cables; significantly thicker with a new high quality rubber plastic blade
- *Includes 110, 66 and Krone blades; easy blade insertion twist and lock in place



RPBTLCR01

Replacement Blades for End-Pass-Through Modular Plug Crimping Tool

- *Replacement Blades 10pcs/pack
- *Application for TLCR01 End-Pass-Through Modular Plug Crimping Tool



RPBTLCR03

Replacement Blades for Portable TLCR03 End-Pass-Through Modular Plug Crimping Tool

- *Replacement Blades 4pcs/pack(2 for front side, 2 for back side)
- *Application for Portable TLCR03 End-Pass-Through Modular Plug Crimping Tool
- *Back side of crimping tool is designed for stripping cables



RPBTLST01

Replacement Blades for TLST01 Adjustable Blade Stripping Tool

- *Replacement Blades 3+3pcs/pack
- *Application for TLST01 Adjustable Blade Stripping Tool



TLBGE

RJ45 Network Cable Crimp Tool Bag

- *Elastic bag handle
- *Different sizes of the elastic band can meet your different needs
- *With Zipper design, carrying and taking out are much more convenient
- *With a separate mesh pocket, you can organize and carry the accessories easily
- *Weight Capacity: 5 Kg



BX011PWH

Blank Keystone Jack Surface Mount Box with Dust Shutter

- *Easily upgrade and install networking point on a desk, furniture, wall or any solid surfaces
- *Slide-out keystone jack frame for easy keystone jack installation into the box
- *Best choice for home renovation and new Ethernet installation in an office
- *Surface mountable with included screws or double stick tape
- *Dust shutter to prevent from getting dust



BX012PWH

Blank Keystone Jack Surface Mount Box with Dust Shutter

- *Easily upgrade and install networking point on a desk, furniture, wall or any solid surfaces
- *Slide-out keystone jack frame for easy keystone jack installation into the box
- *Best choice for home renovation and new Ethernet installation in an office
- *Surface mountable with included screws or double stick tape
- *Dust shutter to prevent from getting dust



WP01XPWH

Classic Keystone Jack Faceplate

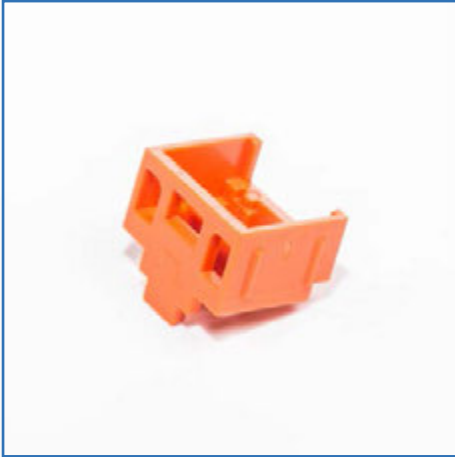
- *Universal installation for different types of keystone jack inserts such as RJ45 Ethernet, HDMI, coaxial, banana plug, and more
- *Perfect for work area and home installations of network, audio and video cables
- *Include mounting 2 screws
- *UL listed and compliant with RoHS



WPBB01SWH

Wall-Mounted Ethernet Cable Junction Back Box

- *Suitable for any kind of single league faceplate
- *There are five holes for stashing cables at four areas on the box(Cut by your own)
- *Include two screws
- *Material are UL listed and compliant with RoHS



KJLKOR

Keystone Jack Lock & Lockpick

- *Keystone Jack Lock & Lockpick
- *Suitable for RJ45 Keystone Jack, Patch Panel, and Internet devices(Switch, Router)
- *Ease installation for RJ45 keystone jack



KJLKKEY

Unlocking tool

- *Unlocking tool
- *With our tool for unlocking, you can remove the lock easily.



HLTS20CBK

Cat type Velcro Cable Tie 20CM

- *Cat type Velcro Cable Tie
- *One component features tiny hooks, the other features smaller loops.
- *Pressed together and the two pieces fasten or bind temporarily
- *Cable ties are ubiquitous because of ease of use, and binding strength
- *Application: Data center cabling, storage cables



HLTR05MBK

Velcro Cable Tie 5M

- *Velcro Cable Tie 5M
- *One component features tiny hooks, the other features smaller loops.
- *Pressed together and the two pieces fasten or bind temporarily
- *Can cut into any length that you need
- *Application: Data center cabling, storage cables



MPSOSTR

Plug-SOS Latch(Claw), Repair Part for RJ45 Plug Latch

- * Plug-SOS Latch(Claw), Repair Part for RJ45 Plug Latch
- * Suitable for RJ45 general plugs, just put on repair part and snap in
- * Easy to installation and repair



MPPBK

RJ45 Modular Plug Protectors Dust Cap

- * Material: ABS



KJPBK

RJ45 Socket Protector Dust Cover/Cap

- * Keep damage which is from dirt etc. away from plugs
- * Suitable for any RJ45 connectors



MI01XX

Multimedia Blank Keystone Jack Insert

- * Fit standard keystone jack port in a wall plate and keystone patch panel
- * Cover unused ports, and remove for port expansions
- * Snap-in blank keystone jack insert for easily added and removed



NLT20CBK

Nylon Cable Tie

- *Nylon Cable Tie
- *Cable ties are ubiquitous because of ease of use, and binding strength
- *Application: Data center cabling, storage cables



SCNTM6

Stainless Steel Cabinet Screws with Nuts and Washer

- *Stainless Steel Cabinet Screws with Nuts and Washer
- *Stainless steel screws are resistant to tarnishing and rust
- *A set contains one screw, one nut, and one washer
- *Suitable for cabinet with square hole