

# Nauticam NA-X5 User Manual

For Insta360 X5 camera

P.N. 15201

International Patent Pending Design

# Foreword

- Thank you for your purchase of a NAUTICAM digital camera housing.
- At NAUTICAM, we pride ourselves on the ability to recognise the requirements of professional as well as amateur underwater photographers and fulfil them through the innovative designs of our products. We strive to achieve a high level of user-friendliness by allowing stress-free installation and easy operation of all important functions of the camera.
- Each housing is individually inspected and water pressure tested to more than 75 metres for housings with a depth rating of 60 metres or 150 metres for housings with a depth rating of 100 metres to ensure optimum quality.
- Please read this manual carefully before using the housing, this will maximise its performance as well as its lifetime.

# Precautions

- A water-tight test without the camera inside the housing is highly recommended when using the system for the first time and after the changing of port and O-ring(s).
- Do not use lubricants from other brands with the silicone rubber O-ring on this housing, only use the lubricant provided by NAUTICAM.
- Discontinue use immediately should you notice any leakage.
- Store the housing in a robust, shock-proof container during transportation; avoid transporting with any equipment, such as a camera, inside the housing.
- When travelling by air, do not close the housing if the port is installed, as this may lead to a pressure difference between the atmosphere and inside the housing.
- Care must be taken when opening the housing, as pressure may build up inside the housing which increases the opening force.
- Do not open the product in a wet or sandy environment. Protect the interior from moisture and debris in order to prevent malfunction or leakage.
- Do not store the product in an environment of high humidity.
- Do not leave the housing and the camera in direct sunlight for prolonged periods.
- Keep out of reach of children, failure to do so could result in injury.
- Defective products should be shipped to our distributors for service, unauthorized disassembling and/or modifications could result in malfunction or leakage.

# Table of Contents

- Package Contents
- Specifications
- Identification of parts
- Preparation of Housing
- Preparation of Camera
- Installing the Camera
- Recommended Post-editing Settings
- Optional Accessories
- Warranty
- Care and Maintenance

# Package Contents

Make sure that you have all the included items listed below before using this product.  
If some items are missing or damaged, please contact the shop where the housing was purchased.



NA-X5 Housing



Carrying Pouch



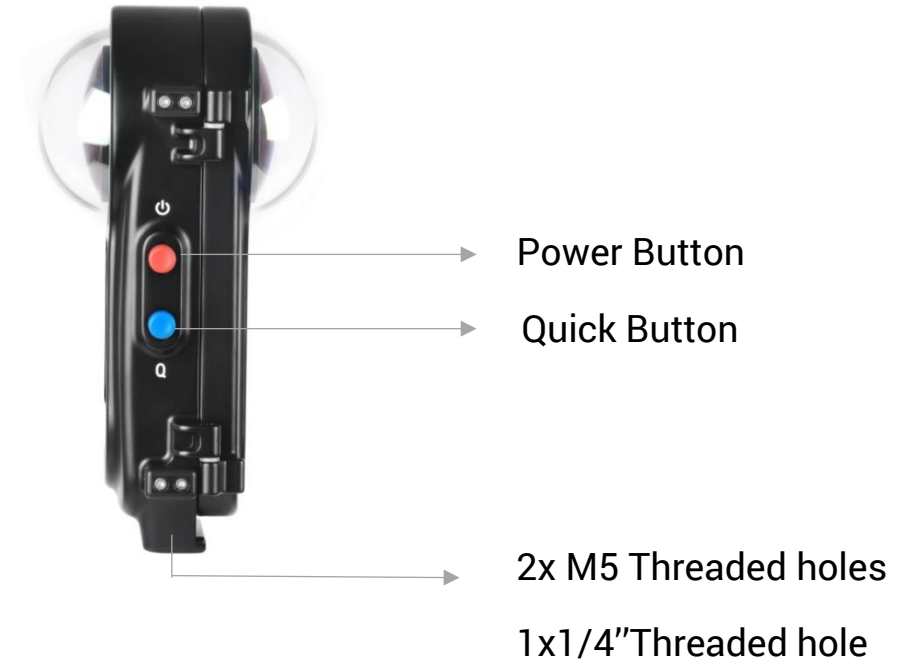
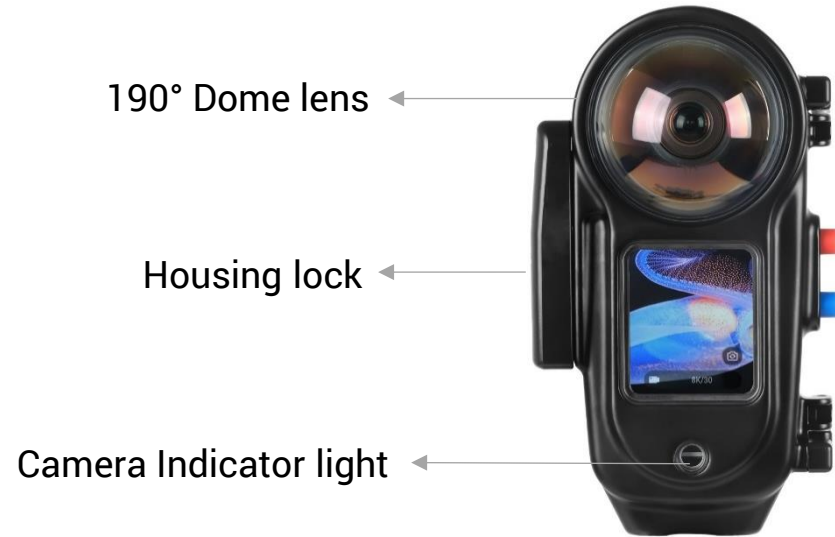
Tool Bag

- Lens removal tool
- Suction Cup
- Spare O-ring
- Cleaning cloth
- Lubricant

# SPECIFICATIONS

- Dimensions: 91.4mm (W) x 156.7mm (H) x 88.5mm (D)
- Weight in air: 630g
- Buoyancy in water: Negative 350g (incl. camera with battery)
- Angle of view (each lens): 190°
- Lens construction (each lens): 3 elements in 2 groups
- Working distance: 0~infinity
- Housing construction: Hard-anodized aluminum alloy
- Lens coatings: Anti-reflection Coating
- Depth Rating: 150 meters
- Mounting points: 1x 1/4"-20 threaded hole, 2x M5 threaded hole.
- Compatible Camera: Insta360 X5

# Identification of parts



# Preparation of Housing

1. After verifying that the housing O-ring is in good condition, lightly coat it with the lubricant provided.
2. Make sure the O-ring groove located in the rear part of the housing is free from any foreign material; the groove can be cleaned with the aid of a microfiber cloth.





# Preparation of Camera

1



Use the Lens Removal Tool to loosen and remove the protective lens ring

2



Attach the Suction Cup firmly to the lens

3



Remove the original lens using the suction cup

4



Set the removed parts aside and store them safely for future use

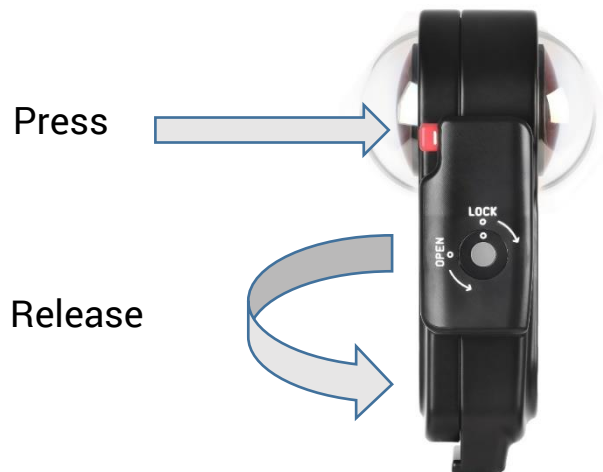
5

Repeat the same step for other sides



Do not touch the lens surface with fingers

# Installing the Camera



Press the red button to release housing lock



Place Insta360 X5 camera inside the housing body



Turn the lock 270° until you hear a click to ensure the housing is securely closed



Auto Dive mode is activated automatically when the camera is installed in the housing

# Recommended Software Settings:

*Under Accessories Assembly:*

## Turn OFF

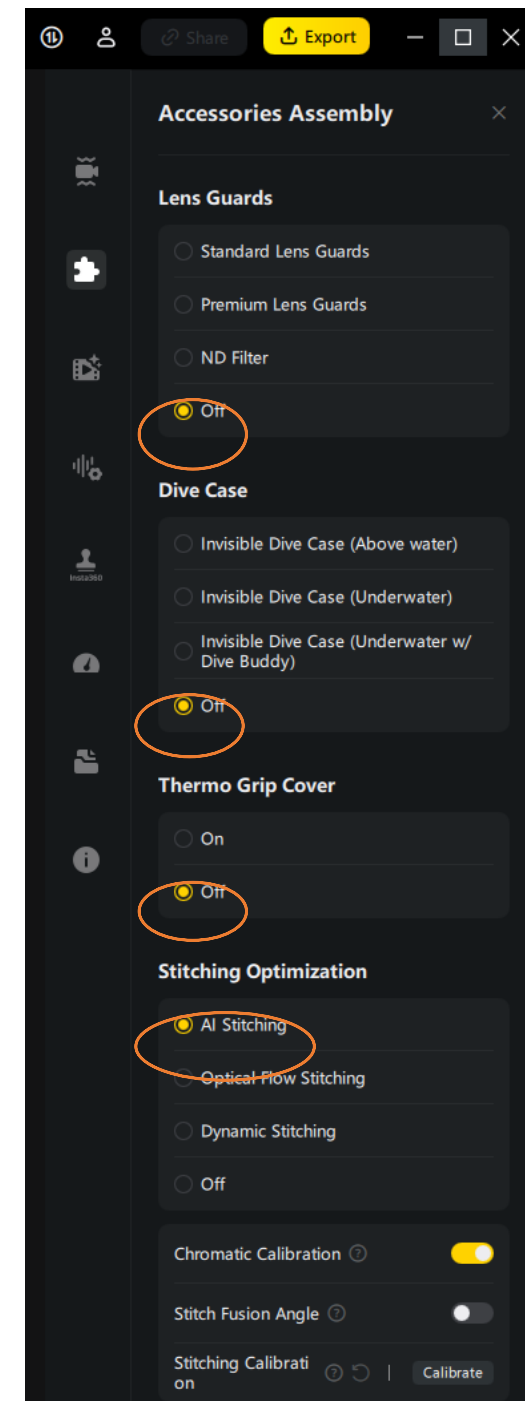
- lens guards
- dive case
- Thermo grip cover settings

## Stitching optimization:

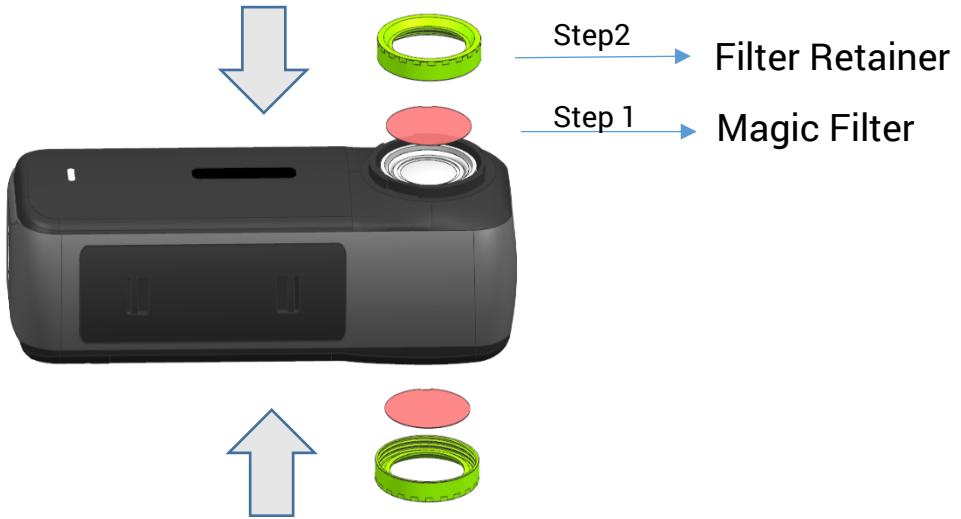
- AI stitching

*Shooting tips:*

The best image quality is achieved by holding the housing vertically while using the longest length of the selfie stick or float stick. And to ensure the best stitching effect, make sure the two dome lenses are facing important scenes, avoiding the stitching line area



# Optional Accessories: Install Magic Filters



Camera ready

Before installing the camera onto the housing:

Place the filter gently on top of the camera lens like shown,  
screw the retaining ring clockwise onto the lens until it goes all the way in

Repeat the same steps for the other side.



Do not overtighten the retainer; stop once you feel firm resistance and see no gap. Using excessive force may strip the threads or crack the ring.

# WARRANTY

All NAUTICAM Housing Products and Viewfinders are warranted against any material and manufacturing defects for two years from the date of purchase for consumer use. NAUTICAM Optical Accessories are warranted against material and manufacturing defects for a period of one year, and HDMI cables carry a year warranty.

This warranty only applies to products purchased from authorized NAUTICAM dealers and does not extend beyond the original retail purchaser. To return your product for service, please contact your regional authorized service center(s). Please note that this warranty only applies when the product is purchased in the territory where the service center is located.

NAUTICAM accepts no liability for any damage to and defects in the housing caused by improper use and/or poor maintenance; it is the responsibility of the owner to carefully follow the instructions in our manuals. NAUTICAM does not hold responsibility for damage, of any nature, to any equipment used with and/or placed within our products.

NAUTICAM accepts no liability for any loss of captured images or the inability to capture images even if it is due to the malfunctioning of our products. Unauthorized modifications and/or repairs of our products will automatically invalidate the warranty.

# Care and Maintenance

1. Soak the housing system in fresh water after each saltwater use
2. Operate all controls and buttons at least 3 times while immersed in fresh water
3. We recommend cleaning and inspecting the main O-ring each time after diving for any damage and every time the housing is opened.
4. Protect the housing with robust and shock-proof travel case during transportation. Do not travel with camera inside housing.
5. We recommend to ship the housing to our service centers for a complete overhaul after 500 dives/every 3 years.

## Recommended Accessories:

- 72601 Ø37x350 Carbon Fiber Aluminum Float Stick (Buoyancy 190g)\*
- 72602 Magic Auto Filter Set x 2pcs
- 72603 1/4" Male to M5 Male Screw Adapter (2PCs)
- 72604 1/4" Male to 1/4" Male Screw Adapter (2PCs)
- 25111 Strobe mounting ball for handle with screws

\*One side is 1/4"-20 male thread, the opposite side is 1/4"-20 female threaded hole

