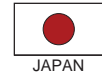


Low Height Castor

SUIT-50



Wheel Material :
Urethane Rubber



Medium Heavy Duty



Available Wheel Size :
75mm - 300mm



Available Allowance Load :
80kgs - 600kgs



Plate Type

▼ J TYPE



▼ K TYPE



▼ JB TYPE



Rubber



Polyurethane



Nylon 6



Extra Heavy Duty



Available Wheel Size :
65mm - 200mm



Available Allowance Load :
170kgs - 660kgs



Plate Type

▼ JM TYPE



▼ KH TYPE



▼ JMB TYPE



Polybutadiene Rubber



Urethane Rubber



MC Nylon



Low Profile Heavy Castor

▼ HG TYPE



▼ HR TYPE



▼ HG-S TYPE



Available Wheel Size :
50 / 65 / 75mm



Available Allowance Load :
160 / 300 / 320kgs



Plate Type



Swivel 160kgs 50mm



Fixed 160kgs 50mm



Brake 160kgs 50mm

Stainless Steel - Polyurethane



Available Wheel Size :
50 / 65 / 75mm



Available Allowance Load :
60 - 70kgs



Plate Type

▼ SUS-SG TYPE



▼ SUS-SR TYPE



▼ SUS-SG-S TYPE



Swivel 70kgs 75mm

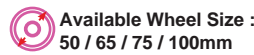


Fixed 70kgs 75mm



Brake 70kgs 75mm

Stainless Steel - Nylon



Available Wheel Size :
50 / 65 / 75 / 100mm



Available Allowance Load :
60 - 80kgs



Plate Type

▼ SUS-SG TYPE



▼ SUS-SR TYPE



▼ SUS-SG-S TYPE



Swivel 70kgs 75mm



Fixed 70kgs 75mm



Brake 70kgs 75mm

Pressed Urethane



Available Wheel Size :
75 / 100 / 130 / 150 / 200mm



Available Allowance Load :
120kgs - 400kgs



Plate Type

▼ J TYPE



▼ K TYPE



▼ JB TYPE



Swivel 300kgs 150mm



Fixed 300kgs 150mm



Brake 300kgs 150mm

Pressed Rubber



Available Wheel Size :
75 / 100 / 130 / 150 / 200mm



Available Allowance Load :
80kgs - 250kgs



Plate Type

▼ J TYPE



▼ K TYPE



▼ JB TYPE



Swivel 200kgs 150mm



Fixed 200kgs 150mm



Brake 200kgs 150mm



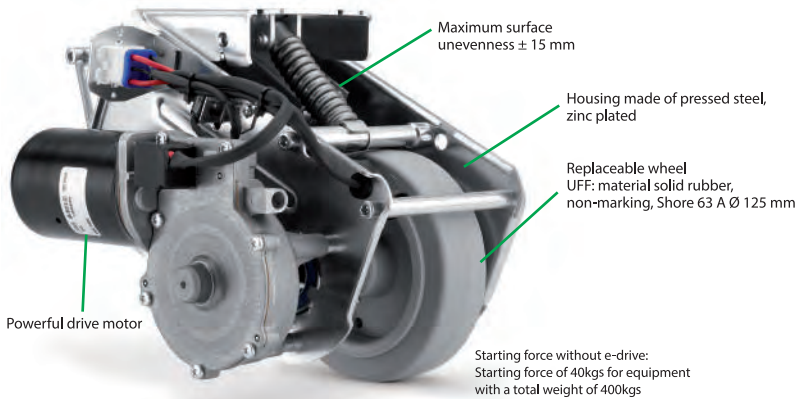
A moving solution E-drive Driving System

The core of this drive system is a DC gear motor that transmits its power to the drive wheel.

The TENTE e-drive 1 system assists the user to move beds with heavy loads in an easier way. The starting and moving in forward and backward direction as well as the stopping clearly facilitated. In addition to the easier handling, time can be saved and days of user sickness caused by the high stress can be minimised

TECHNICAL DATAS

Installation height:	170 mm
Length:	max. 315 mm (emergency release actuated)
Width:	190 mm
Height (retracted):	140 mm
Maximum surface unevenness:	± 15 mm
Lifting force / downforce:	400 N
Weight:	6 kgs
Protection grade:	IP X4



Get heavy loads moving effortlessly with this efficient starting assistance



TUV Certified
The performance standard of these castors even surpasses the requirements of the regulations set out in European standard DIN EN 12531.

BED Castor Twin Wheel Series 2940 • 2944 • 2946



2940UA P150R05-32 2940USX125R05-32 2944USX125R26 2944UAP100R26



Wheel : UAP
Wheel centre : Polyamide,
Tread : Polyurethane,
precision ball bearing



Wheel : USX
electric conductive,
non-marking
Wheel centre : Polyamide,
Tread : Polyurethane,
precision ball bearing,
sealed, washable



Notice
Accessories, dimensions
and technical specification.
Different cam profiles
available on request.



reddot design award
winner



Design Award Winner
German Designer Club



TUV Certified
The performance standard of these castors even surpasses the requirements of the regulations set out in European standard DIN EN 12531.

Care Bed Castor Series 2470



2470PJO075P40 2470PJ P100P30-13 2476PJO150R36-32S30 4xM6 2470PIP125R05-22 TFR 2474PIP100R26-28S45 4xM8



Wheel : PIP
Wheel centre : Polypropylene,
Tread : solid rubber, grey, non-marking,
with threadguards,
precision ball bearing



Wheel : XSX
electric conductive,
non-marking
Wheel centre : Polyamide,
Tread : Polyurethane,
with threadguards,
precision ball bearing, sealed



Pressed steel wheels
Series 2470 is also with
pressed steel wheels DIK
and DYK available.



Wheel : PJP
Wheel centre : Polypropylene,
Tread : TENTEprene
(thermoplastic rubber),
with threadguards,
precision ball bearing

INTEGRAL BED CASTER Series 2040 (Standard) • 7040 (Stainless)



INTEGRAL 2040UA X200R05-28 7040XSX150R05-28 7046UAX150R26-28S45 4xM8 INTEGRAL 2044UAP 125R26-28S45 4xM8 INTEGRAL 2046XSX-200R26-28S45 4xM8



Wheel : UAP
Wheel centre : Polyamide,
Tread : Polyurethane,
precision ball bearing

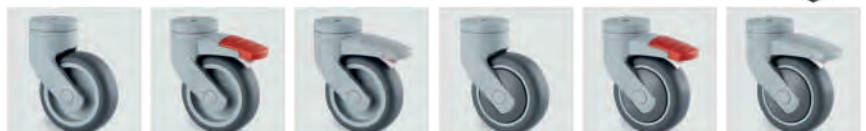


Wheel : UAX
Wheel centre : Polyamide,
Tread : Polyurethane,
precision ball bearing,
sealed, washable



Wheel : XSX
electric conductive, non-marking
Wheel centre : Polyamide,
Tread : Polyurethane,
precision ball bearing,
sealed, washable

LEVINA Design Castor Series 5320 • 5370(Standard) • 5380 (Stainless)



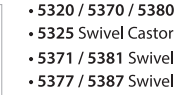
5320 PJO 075 5325 PJO 075 5325 PJO 075 with grey pedal - optional (RAL 7001) 5320 PJP 075 5325 PJP 075 5325 PJP 075 with grey pedal - optional (RAL 7001)



Wheel : PJP
Wheel centre : Polypropylene,
Tread : TENTEprene
(thermoplastic rubber),
with integrated threadguards,
precision ball bearing



Colour options
All versions in grey-white
RAL 9002 and graphite-
black RAL 9011 available.



Grey brake pedal
These castors are also with
grey locking lever available



LEVINA XL
In wheel diameter 125mm
these castors are also
available with extended fork
for a better access to the
brake pedal.

Fittings:

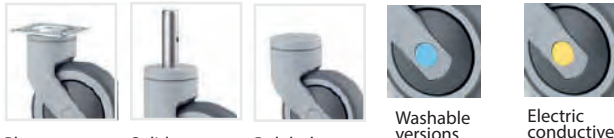


Plate Solid stem Bolt hole Washable versions feature a blue clip. Electric conductive versions feature a yellow clip.

- 5320 / 5370 / 5380 Swivel Castor
- 5325 Swivel Castor with wheel brake
- 5371 / 5381 Swivel Castor with directional lock
- 5377 / 5387 Swivel Castor with total lock



Anti-Static Castor Wheel



TENTE Castors protect against this with a leakage resistance of < 10,000 ohm.

- Each wheel tested under 500 volts direct voltage before deliver to marketplace



▲ Non-staining, Electric conductive

Extra Heavy Duty



FTP

450kgs - 2600kgs



MOP

1100kgs - 1200kgs

100mm - 250mm

Stainless Steel Heavy Duty

Heavy Duty

▼ UOD



Swivel Fixed Brake
200kgs - 80mm - 300kgs - 200mm

▼ UFX



Swivel Fixed Brake
150kgs - 100mm - 300kgs - 200mm

▼ UAD



Swivel Fixed Brake
100kgs - 80mm - 400kgs - 200mm

▼ IEP



Swivel Fixed Brake
200kgs - 100mm - 450kgs - 250mm

▼ ITP



Swivel Fixed Brake
250kgs - 100mm - 1000kgs - 250mm

▼ TOP



Swivel Fixed Brake
500kgs - 100mm - 1100kgs - 250mm

Twin Wheel Castor

30kgs

50mm



UNF 1/2" 3/8 M8



▲ 121/TBA/050T ▲ 125/TBA/050T

38mm x 38mm



▲ 121/TBA/050P ▲ 125/TBA/050P

Friction Ring (11mm)



▲ 122/DOM/050F ▲ 121/TBA/050F

Light Duty



▼ 140 Series

Material : Cast Iron

Top Plate
10kgs - 25mm - 70kgs - 75mm



▼ 601 Series

Material : Hard Rubber

Top Plate
80kgs - 50mm



▼ 611 Series

Material : Hard Nylon

Top Plate
100kgs - 50mm (Twin)



▼ 140 Series

Material : Nylon

Top Plate Thread Stem
10kgs - 25mm - 70kgs - 75mm



▼ 140 Series

Material : Grey Rubber

Top Plate Thread Stem
10kgs - 25mm - 70kgs - 75mm



▼ 160 Series

Material : Grey Rubber

Top Plate Thread Stem
20kgs - 40mm - 80kgs - 75mm



▼ 160 Series

Material : White Polypropylene

Top Plate Thread Stem
10kgs - 25mm - 60kgs - 75mm



▼ 260 Series

Material : Blue Polyurethane

Top Plate Thread Stem
35kgs - 40mm - 80kgs - 63mm



Material : Grey Rubber

Center Hole Top Plate Thread Stem
40kgs - 50mm - 90kgs - 100mm



Material : Blue Grey Rubber

Center Hole Top Plate Thread Stem
35kgs - 50mm - 90kgs - 125mm



Material : Grey Rubber

Expansion Stem Top Plate Thread Stem
60kgs - 75mm - 100kgs - 125mm



Economical Castor



CHINA



40kgs - 195kgs



75mm - 200mm

321/ RBQ



Swivel

322/ RBQ



Fixed

323/ RBQ



Brake

▲ Black Rubber Wheel



45kgs - 195kgs



80mm - 200mm

321/ PYA



Swivel

322/ PYA



Fixed

323/ PYA



Brake

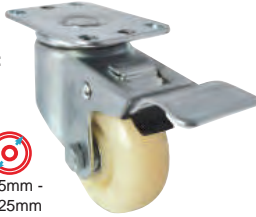
▲ Polypropylene Wheel

Medium Duty



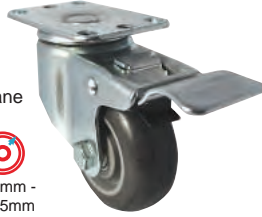
Non-Marking Wheel

Material :
Hi-tech
Nylon



110kgs - 75mm -
150kgs - 125mm

Material :
Grey
Polyurethane



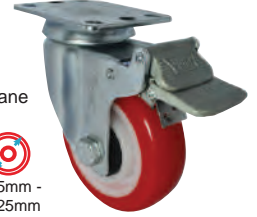
100kgs - 75mm -
150kgs - 125mm

Material :
Hi-tech Perfoma
Rubber



80kgs - 75mm -
115kgs - 125mm

Material :
Red
Polyurethane



90kgs - 75mm -
120kgs - 125mm

Material :
Thermoplastic
Grey Rubber



75kgs - 75mm -
120kgs - 150mm

Material :
Polyamide
Nylon-6



260kgs - 100mm -
380kgs - 150mm

Material :
Yellow
Polyurethane



170kgs - 100mm -
235kgs - 150mm

Heavy Duty

INDUSTRIAL MEDIUM-HEAVY DUTY

490

SERIES

In Compliance To American Standard Specification

Castor 490

Bracket made of hardened steel.
Welded double ballrace swivel head
Metal Parts : Zinc plated



180kgs - 320kgs



100mm - 250mm



Rubber

160kgs - 100mm -
300kgs - 250mm



Polyurethane

220kgs - 100mm -
300kgs - 250mm



Semi-Steel

220kgs - 100mm -
300kgs - 250mm



Phenolic
(-20°C - 148°C)

220kgs - 100mm -
300kgs - 250mm



Nylon

220kgs - 100mm -
280kgs - 200mm



Mild-Steel V Groove

370kgs - 100mm -
470kgs - 200mm



Cast Iron V Groove

350kgs - 100mm -
450kgs - 200mm

Scaffolding



▲ Rubber

180kgs - 150mm -
220kgs - 200mm



▲ Nylon (Ball Bearing)

260kgs - 150mm -
280kgs - 200mm



▲ Polyurethane

260kgs - 150mm -
280kgs - 200mm



▲ Eco-Range Rubber

120kgs - 160mm -
190kgs - 200mm





GAAD Series

kg 250~630kgs **RoHS** **-10~90°C**



GAAD applied two rotation axes with different rotation radius and has the function to automatically optimize the radius of rotation by aligning the rotation axis on its own according to the moving direction in forward/backward motion. The movement of AGVs is affected by the caster offset. If the offset is too long, an AGV can swing, causing it to deviate from the designated path. And if the offset is too short, the drive motor is overloaded. In particular, many AGV engineers are struggling to solve this swinging problem for AGVs which inevitably require reciprocation. The patented automatic aligning function of GAAD is the best AGV caster to solve both problems simultaneously, such as the swinging of AGVs and the overloading of drive motors.

* Recommended Load = Load Cap. X 3

GSAD Series

kg 400~600kgs **RoHS** **-10~90°C**



Brackets : Steel plate, double precision ball bearing in the swivel head strong welded frame self-aligned to optimize heavy load, grease nipple, function with two swiveling axes with different swiveling radii, bolted wheel axle structure.

Surface Treatment : Powder coating, zinc plated
* Recommended Load = Load Cap. X 3

GATD Series

kg 250~630kgs **RoHS** **-10~90°C**



The shaft of GATD has a tilting structure that tilts freely in the range of $\pm 5^\circ$ from its central axis according to the flatness of the floor.

This freedom ensures that GATD always keeps contact with the floor, causing smooth AGV movement and protection of the loaded cargo when changing directions.

* Recommended Load = Load Cap. X 3

GASD Series

kg 250~630kgs **RoHS** **-10~90°C**



AGVs equipped with 4 casters, one of which is often not in contact with the floor. During a change in direction, AGVs lose their balance if one caster which has not been in contact with the floor suddenly touches the floor. Therefore, AGVs deviate from their regular position, which generates a abrupt stop. FOOT MASTER AGV caster - GASD provides the best solution to remove the deviation situation due to swinging.

* Recommended Load = Load Cap. X 3

PH Series

Medium Duty Casters

kg 200~600kgs **RoHS** **-10~90°C** **100mm - 150mm**

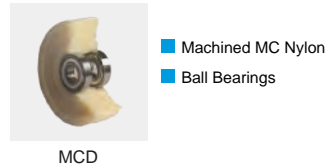


MC Nylon



- PU for Heavy Duty
- Aluminum Core
- Ball Bearings

Polyurethane



- Machined MC Nylon
- Ball Bearings

Brackets : Pressed steel plate, double ball bearing with four hardened bearing seats in the swivel head which is advantages to rapid swiveling and excellent durability, strong integrated pressed steel frame, smooth-operating top brake system, bolted wheel axle structure.

Surface Treatment : Powder coating, zinc plated
* Recommended Load = Load Cap. X 3

UGXT Series

Extra Heavy Duty Casters

kg 6,000~8,000kgs **RoHS** **-10~90°C** **200mm - 300mm**

Brackets : Forged steel plate, thrust bearing and taper roller bearing in the swivel head to optimize heavy load, grease nipple, strong welded steel frame, hand-operated wheel brake system, special wheel axle for reinforce of smooth rolling

Surface Treatment : Powder coating, zinc plated
* Recommended Load = Load Cap. X 3



▲ MC Nylon



GXT Series

Heavy Duty Casters

kg 500~2,700kgs

RoHS

°C -10~90°C

mm 80mm - 200mm



Brackets : Forged steel plate, double thrust bearing in the swivel head to optimize heavy load (125 ~ 250 series : thrust bearing and taper roller bearing), strong welded steel frame, hand-operated wheel brake system, special wheel axle for reinforce of smooth rolling.

Surface Treatment : Powder coating, zinc plated

* Recommended Load = Load Cap. X 3

Wheel Options



HUD

- PU for Heavy Duty
- Aluminum/Steel Core
- Ball Bearings



MCD

- Machined MC Nylon
- Ball Bearings

GD Series

Leveling Casters

kg 50~1,500kgs

RoHS

°C -10~90°C

mm 40mm - 150mm



Brackets : Pressed steel plate (150 series : forged steel), double ball bearing with hardened bearing seats in the swivel head, ivory-colored aluminum frame, height adjustment with integrated orange handle or spanner (120/150 series : only available for spanner), anti-vibration NBR pad (120/150 series : AL)

Guide for selection of wheels :



Nylon 66



MC Nylon



Cast PU

▶ GDR series



Brackets : Pressed steel plate, double ball bearing with hardened bearing seats in the swivel head, ivory-colored aluminum frame, height adjustment with integrated ratchet handle, anti-vibration NBR pad.

Surface Treatment : Powder coating, zinc plated

* Recommended Load = Load Cap. X 2

GSST Series

Shock Absorbing Casters

kg 400~1,350kgs

RoHS

°C -10~90°C

mm 150mm - 250mm



Towing by power vehicle (20km/h)

Brackets : Forged steel plate, ball bearing with hardened bearing seats and thrust bearing in the swivel head (250 series : thrust bearing and taper roller bearing), rugged pressed steel frame with ivory color after welding, fine shock absorption function with special rubber (select between A65 and A75), towing by power vehicle (20km/h), strong top brake system, bolted wheel axle structure

Surface Treatment : Powder coating, zinc plated

* Recommended Load = Load Cap. X 3

Heavy Duty 40 Series



320kgs - 380kgs 100mm - 200mm Swivel Fixed Brake



Manufactured by Kyung Chang Korea

180kgs - 280kgs 100mm - 200mm Swivel Fixed Brake



Manufactured by Kyung Chang Korea
Registered Products with Hyundai & KIA Motor

TOP PLATE - MEDIUM HEAVY DUTY

40

SERIES In Compliance To Korean Standard Specification

Castor 40

Made of hardened steel. Welded double ballrace swivel head
Metal Parts : Galvanized (grease nipple)
Plate with 6 holes

Wheel PC

PC mold on polyurethane cast-iron centre (durometer : 90±5° Shore A)
Round profile PU. Precision ball bearing with steel threadguards
Temperature Range : -40°C to +80°C

TOP PLATE - MEDIUM HEAVY DUTY NSF

40

SERIES In Compliance To Korean Standard Specification

Castor 40

Heavy steel welded construction Zinc plated double ballrace swivel head
Dustproof seal heat treated ballrace

Wheel NL

NL - Made of Nylon-6 material (White)
Non-marking. Double ball bearing. Temperature Range : -30°C +120°C

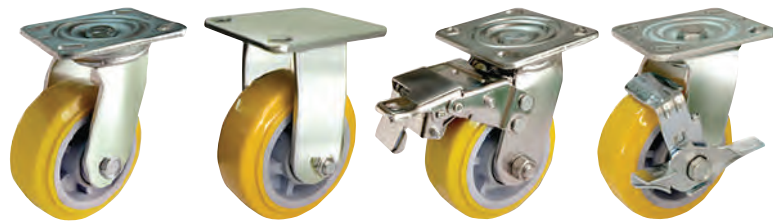
Heavy Duty Stainless Steel

280kgs - 350kgs 100mm - 200mm Swivel Fixed Brake



Manufactured by Kyung Chang Korea
INOX SUS-304

280kgs - 350kgs 100mm - 200mm Swivel Fixed Brake



Manufactured by Kyung Chang Korea
INOX SUS-304

STAINLESS STEEL MEDIUM HEAVY DUTY NSF

40

SERIES In Compliance To Korean Standard Specification

Castor 40

All stainless steel SUS-304 with heavy duty welded construction
Stainless steel double ballrace swivel head
F&B, Bakery, Cold Storage, Hospital and Hygienic Environment

Wheel NLX

Made of Nylon material (non-marking Grey)
Round profile, stainless steel, double ball bearing 6202STS
Temperature Range : -30°C to +80°C

STAINLESS STEEL MEDIUM HEAVY DUTY NSF

40

SERIES In Compliance To Korean Standard Specification

Castor 40

All stainless steel SUS-304 with heavy duty welded construction
Stainless steel double ballrace swivel head
F&B, Bakery, Cold Storage, Hospital and Hygienic Environment

Wheel PCX

Polyurethane tread bonded to polyolefin core
Non-marking, double ball bearing 6202 STS
Temperature Range : -40°C to +80°C
Durometer : 90±5° Shore A

Extra Heavy Duty

42

Series

450kgs - 650kgs 150mm - 300mm

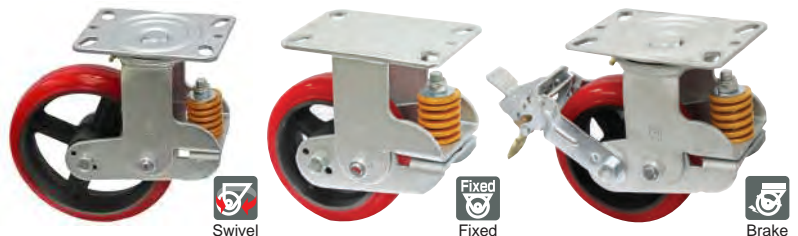


Heavy Duty Spring Loaded

94

Series

350kgs - 450kgs 150mm - 200mm



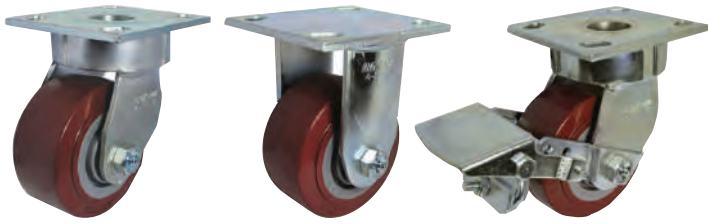
Kingpinless Heavy Duty

270kgs - 450kgs 100mm - 200mm



colson[®]

▼ Impak Kingpinless Style Castor



▼ Wheel Options



▲ Phenolic
-45°C - 180°C



▲ Polyurethane



▲ Semi-Steel

Industrial Castor



Swivel



Fixed



Brake



▼ Red/Grey Polyurethane



100kgs - 80mm - 150kgs - 125mm

▼ White Polypropylene



100kgs - 80mm - 300kgs - 200mm

▼ Grey Rubber



50kgs - 80mm - 205kgs - 200mm

▼ Yellow Ring Black Rubber



50kgs - 80mm - 300kgs - 250mm

▼ Yellow Ring Black Rubber



50kgs - 80mm - 205kgs - 200mm - Thread Stem

Heavy Duty Castor

▼ Red Polyurethane



350kgs - 100mm - 500kgs - 200mm

▼ Spring Loaded Polyurethane



300kgs - 150mm - 350kgs - 200mm

▼ PP Center Black Rubber Wheel (With Brake)



200kgs - 200mm

▼ Shaft fitting Dustbin wheel



100kgs - 200mm

Wastebin Spare Wheel

Medium Duty



STC Series

100kgs - 160kgs 100mm - 150mm

▼ Pressed Rubber Wheel



▲ STC/CBC



▲ SKC/CBC



▲ STC/CBC(S2)



Swivel



Fixed



Brake

STM Series

80kgs - 330kgs 75mm - 250mm

▼ Pressed Rubber Wheel



▲ STM/VS



▲ SKM/VS



▲ STM/VS(W3)



Swivel



Fixed



Brake



PB SERIES



150kgs



Specially designed protectors provide enhanced safety. The protector prevents accidents caused by problems such as jamming when raising the handle. The folding mechanism also helps protect against impacts.

Plastic hand trucks combine lightness and strength. Available in four different colors.

Our plastic hand trucks are manufactured using injection molding machines at our own plant. Light and easy to handle, they are specially designed to withstand impacts. Choose from four colors to match your preference or the task at hand. The quality of the material is polypropylene (PP).



●クールブルー (Cool Blue)



●クールグレー (Cool Grey)



▲ **PB-100**
No-handle type

▲ **PB-101**
Folding handle type



▲ **PB-102**
Fixed handle type



▲ **PB-103**
Front-rear dual-handle type



▲ **PB-104**
Double Deck dual-handle type



▲ **PB-114**
Double Deck single-handle type



▲ **PB-107**
Side-net type



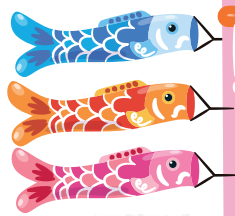
▲ **PB-105**
Triple Deck dual-handle type



▲ **PB-115**
Triple Deck single-handle type



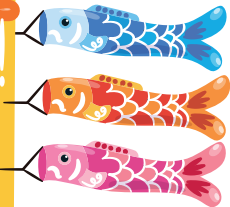
▲ **PB-127**
Double Deck side-netting type



NB SERIES



150kgs



▼ **NB-100**
No-handle type



▲ **NB-101**
Folding handle type



▲ **NB-104**
Double Deck dual-handle type



▲ **NB-114**
Double Deck single-handle type



▲ **NB-107**
Side-net type



▲ **NB-105**
Triple Deck dual-handle type

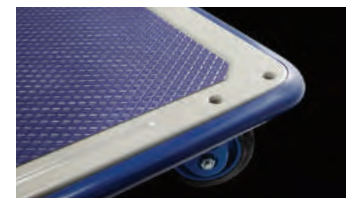


▲ **NB-115**
Triple Deck single-handle type

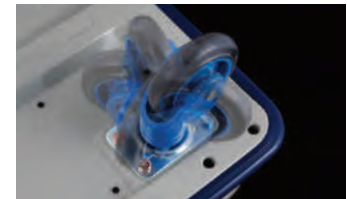


▲ **NB-127**
Double Deck side-net type

Specially designed protectors provide enhanced safety. The protector prevents accidents caused by problems such as jamming when raising the handle. The folding mechanism also helps protect against impacts.



Silent casters for reduced noise Models equipped with low noise casters are available for work situations where avoiding noise is important, such as transporting cargo in offices or at night. It is made of reinforced plastic to prevent corrosion and allow use in food processing plants, or other similar environment.





PF SERIES



300kg



Pursued platform for safety and easiness.

Hand Truck has standard equipment for easy to carry with 2 hand places and 10 big non-slipping plugs on the platform. Safety was also improved by corner with round shaping.



Non-slipping plugs & Silent cushion.

We make a noise reduction possible with non-slipping plugs on the platform when you got the handle folded down.



●クールブルー (Cool Blue)

●クールグレー (Cool Grey)



▲PF-300 No-handle type



▲PF-301 Folding handle type



▲PF-302 Fixed handle type



▲PF-303 Fixed Front-rear dual-handle type



▲PF-304 Double Deck dual-handle type



▲PF-314 Double Deck single-handle type



▲PF-305 Triple Dec dual-handle type



▲PF-315 Triple Deck single-handle type

Intensity enhancement with reinforced pipes.

Intensity enhancement and weight saving has come true by inserting 2 reinforced pipes into the platform.



▲PF-307 Side-netting type



▲PF-327 Double Deck side-netting type

NF SERIES



300kg



▼NF-300 No-handle type



Prestar hand trucks are proudly made in Japan and offer reliability you can depend on.

We continue to manufacture our hand truck products right here in Japan to assure our customers convenient operation, long service life, and peace of mind. Each model in our extensive lineup is carefully built to the highest standards. Every day, in workplaces all over the world, our customers depend on Prestar hand trucks as indispensable partners.



▲NF-301 Folding handle type



▲NF-302 Fixed handle type



▲NF-303 Fixed Front-rear dual-handle type



▲NF-304 Double Deck dual-handle type



▲NF-305 Triple Deck dual-handle type



▲NF-314 Double Deck single-handle type



▲NF-315 Triple Deck single-handle type



▲NF-307 Side-netting type



▲NF-327 Double Deck side-netting type



▲NF-333 Left-right dual-handle type



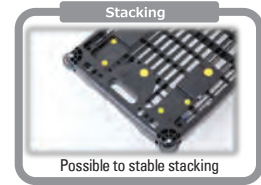
Platform elevated at an angle of 2 degrees



PM-201
(Black)



PM-S201
(Black)



Possible to stable stacking



Protection from damage



Rolling Movement

Possible to roll and carry



4 Sides Grips

4 Sides grips for easy carry



Lock on Handle

For easy carry



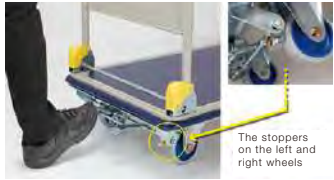
One Hand Carry

For easy carry by one hand



PARKING

Simply press the foot pedal to apply or release the parking brake. It is also possible to mount stoppers afterward on hand truck that are already in service.



FOOT PARKING

Step onto the On-Brake pedal to engage stopper on the left and right wheels to parking position. To release brake, simple step onto the Off-Brake pedal.

The stoppers on the left and right wheels



HAND PARKING

Grip the handle to release the brake. The brake engages automatically when the handle is released. This safe parking function ensures that the hand truck will not move unexpectedly while it is stopped.



NB-S101
Folding handle type



NF-S301
Folding handle type



PM-S101
Folding handle type



PF-S301
Folding handle type



NG-S401-8
Folding handle type



TF-S402
Fixed handle type



PG-S502
Fixed handle type



NF-HP301
Folding handle type



PF-HP301
Folding handle type



NF-HP301
Side-net type



PF-HP301
Side-net type



NB-HP301
Folding handle type



PB-HP301
Folding handle type

TF SERIES

TF-402
Fixed handle type



TF-403
Fixed Front-rear dual-handle type

PG SERIES

PG-500
No-handle type



PG-502
Fixed-handle type



PG-503
Fixed Front-rear dual-handle type



NG SERIES

NG-400-6
NG-400-8
No-handle type



NG-401-6
NG-401-8
Folding handle type



NG-402-6
NG-402-8
Fixed handle type



NG-403-6
NG-403-8
Fixed Front-rear dual-handle type



NG-407-6
NG-407-8
Side-netting type



NG-433-6
NG-433-8
Left-right dual-handle type



WORKTAINERS

Double-Coating Cation
Electro-Deposition Coating +
Powder Coating

- ✓ Multi-functional Elegant Design
- ✓ High Quality & Environmentally Friendly
- ✓ High Volum Capacity & High Impact Plastic/Metal Base
- ✓ Space-Saving Nesting Ability
- ✓ Ease Of Movement/Easy to Push
- ✓ Quiet, Lightweight & Durable

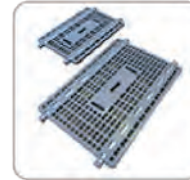
Assembled
Without Door Metal Base



Folded
Without Door Plastic Base



Optional Metal Shelf



Optional Plastic Shelf



▲ Security Worktainers

▲ Worktainers

	External Dimensions (mm) (length x width x height)	Internal Dimensions (mm) (length x width x height)	Load Capacity (kgs)
WTP-85-60 (SMALL)	850x600x1700	790x545x1450	400
WTP-110-80 (BIG)	1100x800x1700	1230x442x1500	500

- ✓ Easy & 360° degrees Rotatable
- ✓ Low Noise Level & Optional Shelves
- ✓ High Quality & Environmentally Friendly
- ✓ Easy Storage in Tight Places
- ✓ Sturdy Configuration

SLIM CART

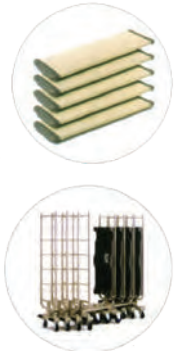
Slim Cart. You can handle easily in any narrow spaces. With its six wheels, Slim Cart can turn in a small radius. And the double coating paint makes the carts strong and look beautiful. When you stack the carts by lifting the bottom plates, you can store them in very limited spaces. For our easy carrying nesting type products, you can also choose products with the brakes option. [The Middle shelves are optional products.]



▲ 4 Wheel Slim Cart



▲ 6 Wheel Slim Cart



	Slim Cart	Size (mm) (length x width x height)	Loading Size (mm) (length x width x height)	Caster Ø (mm)	Load Capacity (kgs)
6SC-503	6-wheels Slim Cart Stacking Without Brake / with Shelf	1277x445x1500	1277x445x1500	130 x 2nos 100 x 4nos	500
4SN-S303	4-wheels Slim Cart Nesting With Total Lock & Directional Lock	1020x480x1650	1230x442x1500	130 x 4nos	300

CASTERS

 A variety of casters are available for different application and purposes.

4 Inches



5 Inches



6 Inches



8 Inches





EN-131 FIBREGLASS



▲ FIBREGLASS PLATFORM LADDER
PL-SYF (2 Steps - 8 Steps)

ANSI FIBREGLASS



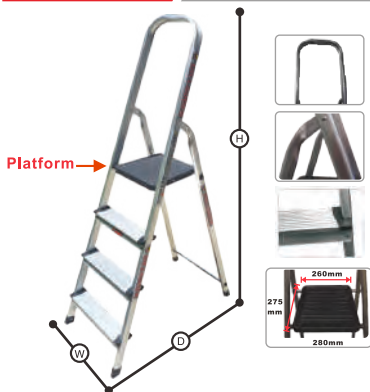
▲ TRESTLE FIBREGLASS LADDER
TR-DFB (4 Steps - 16 Steps)

ANSI FIBREGLASS



▲ FIBREGLASS EXTENSION LADDER
EX-NFY (8 x 2 Steps - 16 x 2 Steps)

EN-131 ALUMINIUM



▲ HOUSEHOLD STEP LADDER
HHL-SAS (2 Steps - 8 Steps)

EN-131-7 FIBREGLASS



▲ FIBREGLASS WORKING STAGE
SPL-NFB (3 Steps - 5 Steps)



▲ DR SCAFFOLD (FOLDABLE)



MAX LOAD CAPACITY **150 kgs**



▲ SLIM STEP LADDER
SJ3.0 (2 Steps - 4 Steps)



▲ ALUMINIUM ZERO STEP LADDER
WDC (2 Steps - 4 Steps)



▲ ALUMINIUM TWIN LADDER
ZJB (5 Steps - 12 Steps)



▲ FIBREGLASS TWIN LADDER
RGF (3 Steps - 12 Steps)

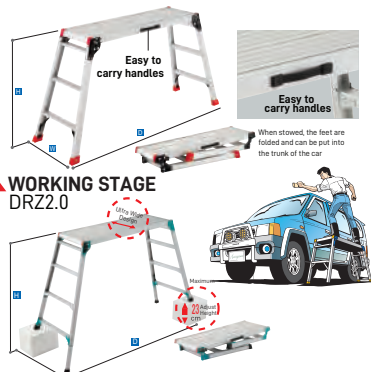
MAX LOAD CAPACITY **100 kgs**



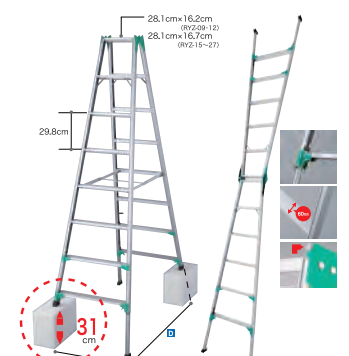
▲ ALUMINIUM TRESTLE LADDER
RZ1.0 / RZB1.0 (2 Steps - 7 Steps)



▲ ALUMINIUM TRESTLE LADDER (ADJUSTABLE)
RZS1.0 (4 Steps - 7 Steps)



▲ WORKING STAGE (ADJUSTABLE)
DRSW2.0



▲ TRESTLE ALUMINIUM LADDER (ADJUSTABLE)
RYZ1.0 (3 Steps - 7 Steps)

DARK HORSE

MAX LOAD CAPACITY **170 kgs**

ANSI FIBREGLASS



WORK SAFELY IN INDUSTRIAL APPLICATIONS

Fade-resistant, non-conductive black-resin fibreglass rated for industrial use.

▲ DARK HORSE FIBREGLASS MULTI-USE LADDER

ALTA-ONE

MAX LOAD CAPACITY **150 kgs**

ANSI



Work safely and easily on stairs and uneven surfaces.



AEROSP ACE-GRADE ALUMINIUM

Built for lightweight performance with maximum stability and strength



PATENTED TRAPEZOID RUNG

Level standing surface in all configurations

▲ ALTA-ONE ALUMINIUM MULTI-USE LADDER

SELECT STEP

MAX LOAD CAPACITY **150 kgs**

ANSI



Extra wide base for unmatched stability



Comfort Step™ provides full heel-to-toe foot support—feels like standing on solid ground

▲ SELECT STEP ALUMINIUM MULTI-USE LADDER

CAGE

MAX LOAD CAPACITY **170 kgs**

ANSI FIBREGLASS



▲ AERIAL SAFETY CAGE LADDER

SAFETY STEP

MAX LOAD CAPACITY **150 kgs**

ANSI



▲ SAFETY STEP ALUMINIUM LADDER

JUMBO STEP

MAX LOAD CAPACITY **150 kgs**

ANSI



▲ JUMBO STEP ALUMINIUM LADDER



MAX LOAD CAPACITY **150 kgs**

COMBAT

★ YOUR STRONGER LADDER CHOICE ★

EN-131 ALUMINIUM



Wider checker platform provides secure and comfortable work areas.



Handrail to support when climbing.



Foldable platform for easy storage.



Non-marking castor wheel ease for movement.



Safety guard rail.

▲ ALUMINIUM PLATFORM TROLLEY LADDER TF- PTL (3 Steps - 12 Steps)



Use hinge lock for different usage.



Foldable and easy to storage.



Wider spread leg to enhance the stability of the ladder

▲ ALUMINIUM MULTIPURPOSE STEP LADDER TF- MPL (12 Ft & 14 Ft)



10 inches of step interval.



Flat bar to have more stability ladder when climb on.



Durable body to support heavy duty job.



Slip-resistant step with step width of 3 inches.



Solid rivet spreader to strengthen locking system.

▲ ALUMINIUM DOUBLE SIDED A SHAPE LADDER DSL (3 Steps - 24 Steps)



▼ Shopping Trolley



▼ Walkway Castor



▼ 2 Wheels Trolley



▼ Wheel Barrow



▼ F&B Trolley



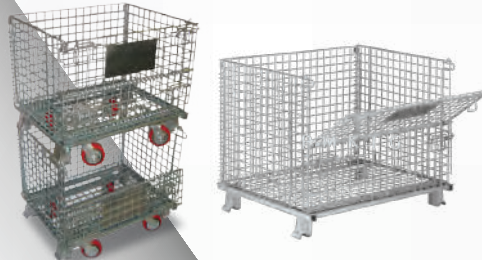
▼ 3-In-1 Trolley



▼ Pallet Truck



▼ Pallet Mesh



▼ Ladder Trolley



▼ Auto Gate Wheel



▼ Floor Lock



▼ Leveling Mount



▼ Stacker



▼ Lift Table



▼ PU Rebonding



Klang



Malaka Location



JB Location



Sab





A4 Paper Smartist (70Gsm) (500 Sheets) 5 Reams / Box

Price low as

RM 8.40 /ream*

MOQ 1000 reams

500 reams- RM8.60/ream

200 reams- RM8.80/ream

*While stock last

A4 Paper Double A (70Gsm) (500 Sheets) 5 Reams / Box

Price low as

RM 9.30 /ream*

MOQ 1000 reams

500 reams- RM9.60/ream

200 reams- RM9.90/ream

*While stock last





3 option Armrest

ELIXIR



Armrest (A)



Armrest (B)



Armrest (C)



CL 661 (A)



CL 272 (C)

For more detail, kindly **CONTACT US**

EMAIL:

sales@banhoh.my / marketing@banhoh.my

TEL:

+603 4143 1799 (10 lines)

