



OptiBond™ eXTRa Universal

Two-Component Universal Adhesive

ONE BRAND. ONE PROTOCOL. ANY PROCEDURE.

Introducing OptiBond™ eXTRa Universal. Built on its predecessor OptiBond™ XTR, it combines the reliability of patented OptiBond™ GPDM technology with the peace of mind of a consistent, universal solution. Its two-component formulation brings together the power of a total-etch adhesive and the safety of a self-etch technique in one consistent protocol.

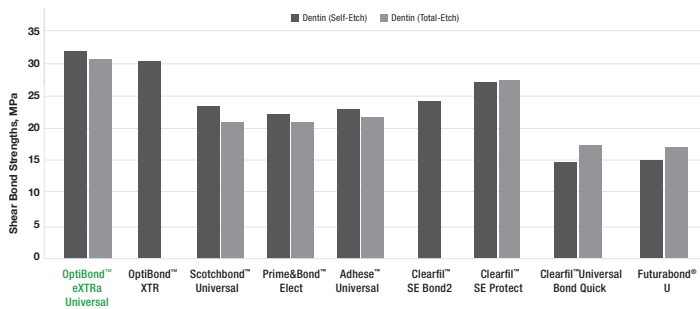
Efficacy and simplicity coming together at last.



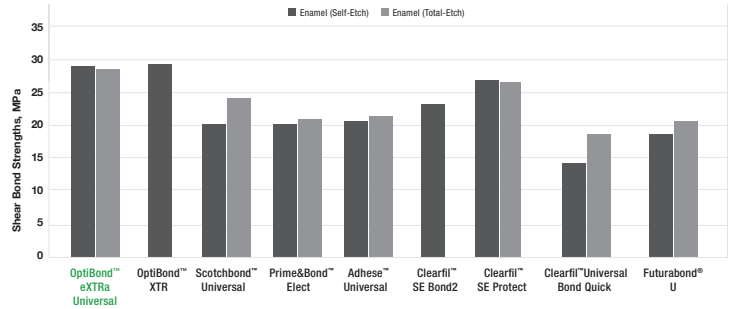
The Gold Standard In Adhesion.

Kerr's proven **OptiBond™ GPDM Monomer** ensures more effective and reliable adhesion than other adhesive monomers to both the tooth structure and the resin material. It contains both acidic phosphate groups to effectively anchor the adhesive to the hydrophilic surface of the tooth and more methacrylate functional groups than other adhesive monomers (i.e. MDP) for a more effective interface with the hydrophobic resin. This creates better compatibility with both substrates and overall higher bond strength.

Shear Bond Strengths of Universal Adhesive to Dentin



Shear Bond Strengths of Universal Adhesive to Enamel

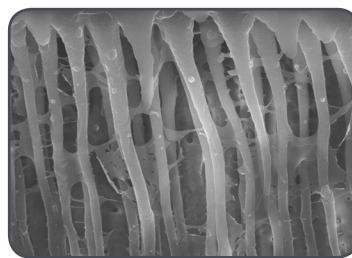


Based on the proven OptiBond technology of its predecessor Kerr OptiBond XTR, Kerr OptiBond™ eXTRA Universal yields outstanding results ensuring superior bond strength compared to leading competitors* on both dentin and enamel, offering a consistent outcome under different etching techniques and substrates. Kerr R&D data. OptiBond XTR and Clearfil SE Bond 2 are indicated for Self-Etch mode only.

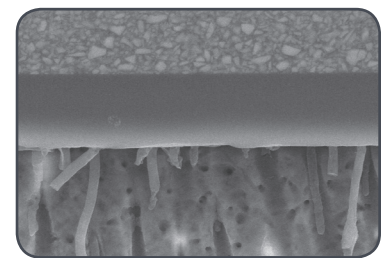
*Compared to Scotchbond™ Universal, Prime&Bond™ Elect, Adhese™ Universal, Clearfil SE Protect, Clearfil Universal Bond Quick, Futurabond U to dentin and enamel on Self-Etch and Total Etch mode; Compared to Clearfil SE Bond 2 to dentin and enamel on Self-Etch mode. Samples were prepared per individual manufacturer's instruction for use.

Effective Plug & Seal Action.

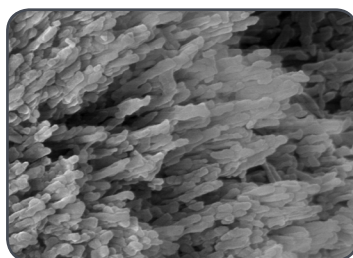
The Primer component is very acidic and hydrophilic, resulting in unique nanoetching capability and outstanding dentin tubule penetration. The Adhesive component is hydrophobic, offering efficient polymerization to boost mechanical strength, bond durability and marginal integrity.



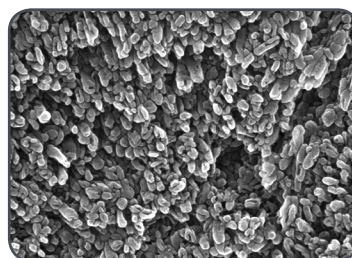
Dentine tubules 2,000x - OptiBond eXTRA Universal Self-Etch Mode



Dentine tubules 2,000x - Leading Competitor Self-Etch Mode



Uncut enamel 50,000x - Kerr Gel Etchant



Uncut enamel 50,000x - OptiBond eXTRA Universal Self-Etch Mode



Uncut enamel 50,000x - Leading Competitor Self-Etch Mode



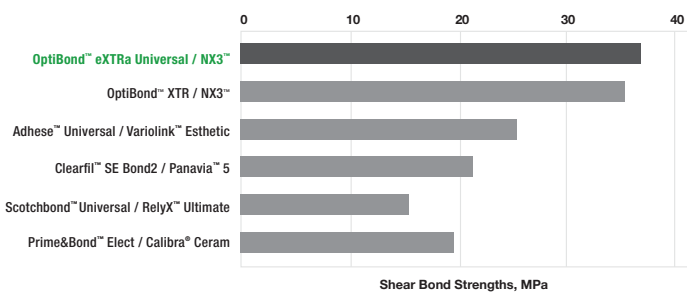
Ternary Solvent System

One Technology; It's All You Need.

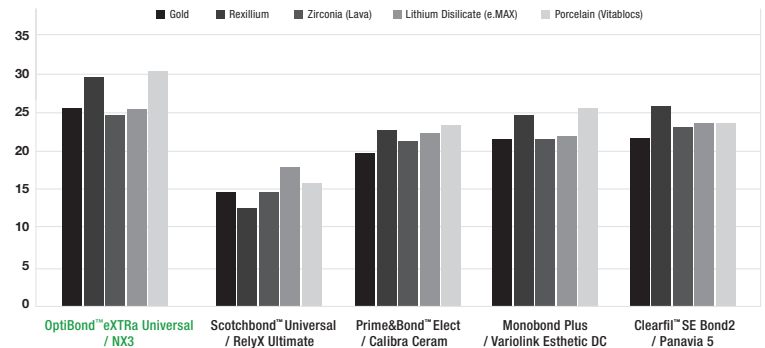
Kerr's patented formula is enriched with our **GPDM Monomer** and novel **Ternary Solvent System**, effectively etching the enamel while promoting the priming and sealing of dentin. Collectively, this results in a more reliable and less sensitive technique.

- **WATER** enhances etching power and wetting ability, facilitating penetration of adhesive in dentinal tubules
- **ACETONE** enhances shelf-life stability and increases acidity and etching during application due to its quick evaporation
- **ETHANOL** facilitates the formation of a homogeneous adhesive layer, resulting in a less technique sensitive application

Indirect Bond Strength to Dentin
(Bond Compatibility)



Indirect Bond Strength to Dentin
(Bond Compatibility with Different Substrates)



■ The combination of Kerr OptiBond™ eXTRa Universal/NX3™ Cement is proved to deliver superior bond strength to dentine and excellent results on different substrates without the need of any auxiliary products compared to leading competitors**, combining predictable outcome with the simplicity of a consistent protocol. Kerr R&D data.

**Compared to Adhese™ Universal/Variolink II, Clearfil SE Bond 2/Panavia 5, Scotchbond™ Universal/RelyX Ultimate, Prime and Bond™ Elect/Calibra Ceram, Monobond Plus/Variolink Esthetic DC. Samples were prepared per individual manufacturer's instruction for use.

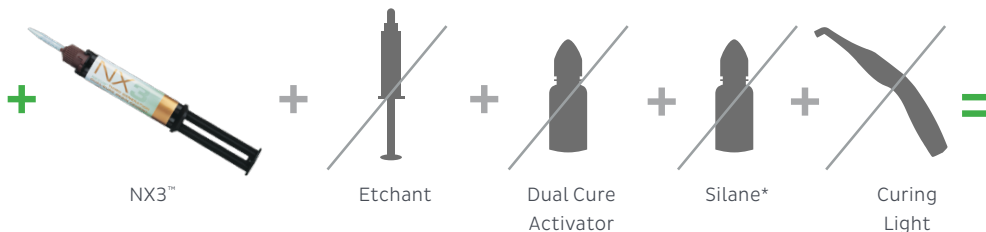


Smart pH Technology

Two Bottles. One Consistent Protocol.

Prior to curing, OptiBond eXTRa Universal features a very low pH for effective enamel etching. After curing, the pH neutralizes, creating outstanding compatibility with virtually all types of cements, composites and core build-up materials and eliminating the need for any auxiliary product.

When used together, OptiBond™ eXTRa Universal and NX3 Nexus™ cement combine the clarity of one standardized process for all indirect procedures, with outstanding results even in **total dark cure mode**.



*OptiBond eXTRa Universal Adhesive can be used as Silane replacement, eliminating the need for any additional auxiliary product.

Ordering Information

- 36658** OptiBond eXTRa Universal Bottle Kit (10ml)
 - 36659** OptiBond eXTRa Universal Unidose Kit (100 Pack)
 - 36660** OptiBond eXTRa Universal Bottle Refill - Primer (5ml)
 - 36661** OptiBond eXTRa Universal Bottle Refill - Adhesive (5ml)
 - 24680** Applicators (50 Applicators x 4 Boxes)
-

Innovative brush box design to avoid product cross contamination for a safe procedure at any application.



Visit KerrDental.com or call 1-800-537-7123 for more information on how to order or additional restorative solutions.