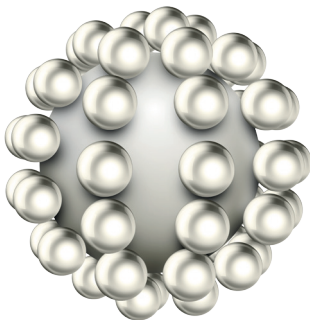


UNMATCHED AESTHETICS

EXPERIENCE LIFELIKE AESTHETIC RESULTS, OWING TO THE SPECIALLY CONTROLLED SIZE AND SHAPE, AND CONFIGURATION OF HARMONIZE'S **ART** NANOPARTICLES:

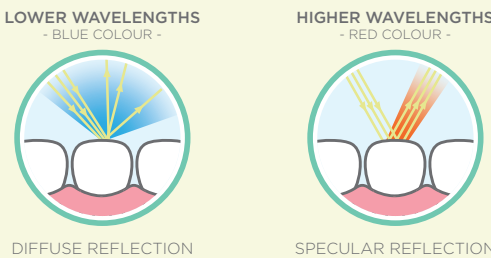
- LIGHT DIFFUSION AND REFLECTION **SIMILAR TO HUMAN ENAMEL.**
- AN **ENHANCED CHAMELEON EFFECT** FOR BETTER BLENDING.



2^{OUT OF 3} DENTISTS REPORTED HARMONIZE TO HAVE SUPERIOR OVERALL AESTHETIC PROPERTIES COMPARED TO THEIR CURRENT COMPOSITE²

² 18 out of 27 Leading EU Dentists
Harmonize Field Evaluation EMEA Sept 2016

LIGHT REFLECTION LIKE A NATURAL TOOTH



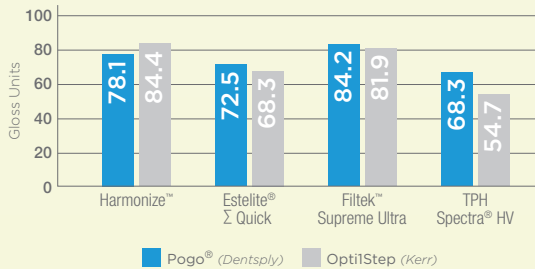
JUST LIKE A NATURAL HUMAN TOOTH, AND UNLIKE OTHER UNIVERSAL COMPOSITES, HARMONIZE ADAPTS TO THE LIGHT WAVELENGTH BY REFLECTING DIFFUSE LIGHT AT LOWER WAVELENGTHS AND SPECULAR LIGHT AT HIGHER WAVELENGTHS.

THIS RESULTS IN **BETTER BLENDING** THAN OTHER LEADING COMPOSITES.
(internal data on file).

HIGH GLOSS AND CONSISTENT POLISH

THE PARTICLE SIZE AND STRUCTURE ALSO OFFER **EASIER POLISHABILITY**, AND, WHEN USED WITH OPTISTEP POLISHER, HAVE DEMONSTRATED BETTER AND MORE CONSISTENT RESULTS THAN THE COMPETITION.³

MOREOVER, THEY ARE DESIGNED FOR **SUPERIOR GLOSS RETENTION**, EVEN WHEN COMPARED TO OTHER LEADING COMPOSITES.
(internal data on file).



³Study conducted at University of Alabama, 2016.

GET READY TO ELEVATE YOUR ARTISTRY

Harmonize - Syringe Trial Kit

CONTENTS: 4x 2g Syringe (1x Dentine A3, 1x Dentine A3.5, 1x Enamel A2, 1x Enamel A3); Instructions for Use.

| Part No. | Description |
|----------|-------------------------------|
| 36631 | Harmonize – Syringe Trial Kit |

Harmonize - Unidose Trial Kit

CONTENTS: 20x 0.25g Unidose (5x Dentine A3, 5x Dentine A3.5, 5x Enamel A2, 5x Enamel A3); Instructions for Use.

| Part No. | Description |
|----------|-------------------------------|
| 36632 | Harmonize – Unidose Trial Kit |

Harmonize - Refill

| Shade | 1x 4g Syringe | 20x 0.25g Unidose |
|---------------------------------|---------------|-------------------|
| Dentine A1 | 36545 | 36571 |
| Dentine A2 | 36536 | 36572 |
| Dentine A3 | 36546 | 36573 |
| Dentine A3.5 | 36547 | 36574 |
| Dentine A4 | 36548 | 36575 |
| Dentine B3 | 36549 | 36576 |
| Dentine C4 | 36550 | 36577 |
| Dentine XL2 | 36551 | 36578 |
| Enamel A1 | 36552 | 36579 |
| Enamel A2 | 36537 | 36542 |
| Enamel A3 | 36553 | 36581 |
| Enamel A3.5 | 36554 | 36582 |
| Enamel A4 | 36555 | 36583 |
| Enamel B1 | 36556 | 36584 |
| Enamel B2 | 36557 | 36585 |
| Enamel B3 | 36558 | 36586 |
| Enamel B4 | 36559 | 36587 |
| Enamel C1 | 36560 | 36588 |
| Enamel C2 | 36561 | 36589 |
| Enamel C3 | 36562 | 36590 |
| Enamel C4 | 36563 | 36591 |
| Enamel D2 | 36564 | 36592 |
| Enamel D3 | 36565 | 36593 |
| Enamel D4 | 36566 | 36594 |
| Enamel XL | 36567 | 36595 |
| Incisal Translucent Amber | 36538 | 36543 |
| Incisal Translucent Blue | 36568 | 36597 |
| Incisal Translucent Clear | 36569 | 36598 |
| Incisal Translucent Gray | 36570 | 36599 |
| Incisal Translucent SuperClear* | 36539 | Not Available |

* 3g Syringe

Harmonize - Syringe Intro Kit

CONTENTS: 4x 4g Syringe (1x Dentine A3, 1x Dentine A3.5, 1x Enamel A2, 1x Enamel A3); Instructions for Use.

| Part No. | Description |
|----------|-------------------------------|
| 36633 | Harmonize – Syringe Intro Kit |

Harmonize - Unidose Intro Kit

CONTENTS: 40x 0.25g Unidose (10x Dentine A3, 10x Dentine A3.5, 10x Enamel A2, 10x Enamel A3); Instructions for Use.

| Part No. | Description |
|----------|-------------------------------|
| 36634 | Harmonize – Unidose Intro Kit |

Harmonize - Syringe Advanced Kit

CONTENTS: 8x 4g Syringe (1x Dentine A2, 1x Dentine A3, 1x Dentine A4, 1x Enamel A2, 1x Enamel A3, 1x Incisal Amber, 1x Incisal Clear, 1x Incisal Gray); Instructions for Use.

| Part No. | Description |
|----------|----------------------------------|
| 36635 | Harmonize – Syringe Advanced Kit |

Harmonize - Unidose Advanced Kit

CONTENTS: 80x 0.25g Unidose (10x Dentine A2, 10x Dentine A3, 10x Dentine A4, 10x Enamel A2, 10x Enamel A3, 10x Incisal Amber, 10x Incisal Clear, 10x Incisal Gray); Instructions for Use.

| Part No. | Description |
|----------|----------------------------------|
| 36636 | Harmonize – Unidose Advanced Kit |

Harmonize, Herculite and OptiStep are either registered trademarks or trademarks of Kerr Corporation in the United States and/or other countries. All other trademarks are property of their respective owners.

Harmonize™
Nanohybrid Universal Composite



EXPERIENCE THE NEXT GENERATION
COMPOSITE THAT ELEVATES YOUR
ARTISTRY

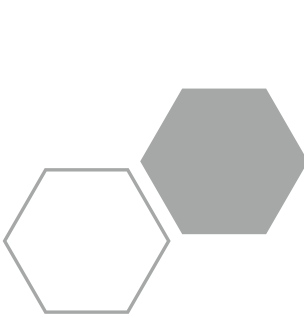


LIFELIKE RESTORATIONS NEED YOUR TOUCH AND ART

HARMONIZE™ BEGINS WITH **ART**, ADAPTIVE **RESPONSE** **TECHNOLOGY**, A NANOPARTICLE FILLER SYSTEM THAT MAKES ACHIEVING **LIFELIKE RESTORATIONS** EASIER THAN EVER BEFORE.

ART ALSO ENABLES **BETTER BLENDING CAPABILITIES** AND **ENHANCED STRUCTURAL INTEGRITY**, PROVIDING YOUR RESTORATIONS WITH EXCEPTIONAL STRENGTH AND UNMATCHED AESTHETICS.

SCIENCE AND BEAUTY COMING TOGETHER AT LAST.



EASIER HANDLING

FEEL AN EASIER WAY TO CARVE THE ANATOMY OF YOUR COMPOSITE, FROM THE COMBINATION OF HARMONIZE'S UNIQUE, SPHERICAL **ART** NANOPARTICLES, AND A PATENTED RHEOLOGICAL MODIFIER:

- **ADAPTIVE VISCOSITY DURING APPLICATION**, DEPENDING ON THE PRESSURE APPLIED WITH THE INSTRUMENT.
- **MINIMISED STICKINESS WITH NO SLUMPING**. NO REWORK IS NECESSARY.

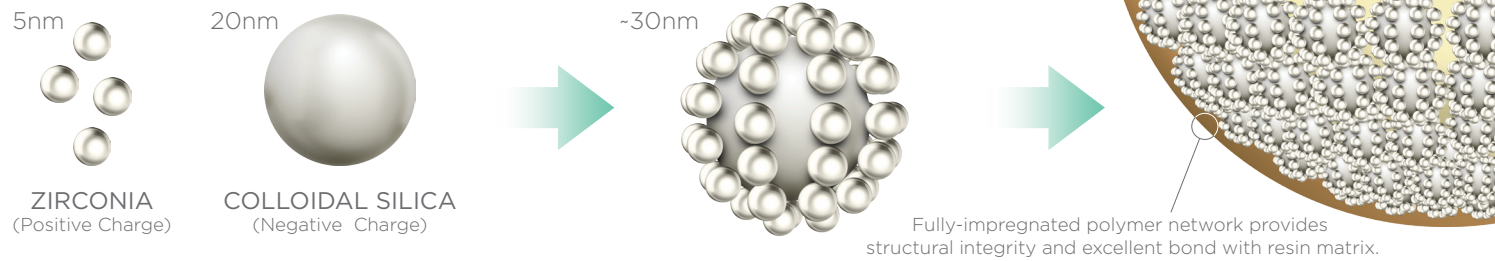
94% OF LEADING US DENTISTS RATED
HARMONIZE EXCELLENT IN HANDLING⁴

⁴ In a blind evaluation, 94% of leading US dentists stated Harmonize had excellent handling characteristics including stickiness, carvability, spreadability, and viscosity.

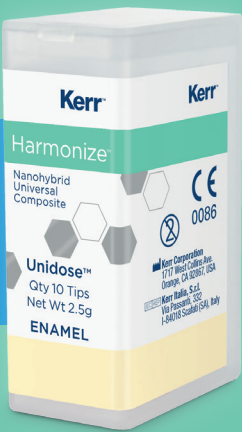
EXCEPTIONAL STRENGTH

COUNT ON DURABLE RESTORATIONS, THANKS TO THE SOLID **REINFORCED FILLER SYSTEM** CREATED BY THE INTERACTION OF HARMONIZE'S ART NANOPARTICLES:

- **INCREASED STRENGTH**, OWING TO THE HIGH FILLER LOAD (81% BY LOAD).
- **STRONGER BOND BETWEEN RESIN AND FILLER**, PROVIDING A LASTING PERFORMANCE.



2 OUT OF 3 DENTISTS WOULD
CONSIDER SWITCHING
FROM THEIR CURRENT COMPOSITE
TO **HARMONIZE**¹



¹18 out of 27 Leading EU Dentists – Harmonize Field Evaluation EMEA Sept. 2016

DYNAMIC VISCOSITY

THE ART NANOPARTICLE FILLER SYSTEM **ADAPTS TO THE CLINICIAN'S BEHAVIOUR**:

THE EXCLUSIVE **RHEOLOGICAL MODIFIER** IMPROVES FLOWABILITY WHILE SCULPTING, MAKING IT **EASY TO SHAPE THE COMPOSITE**.

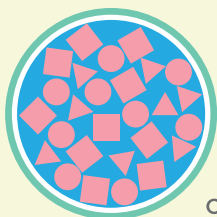
WHEN SCULPTING IS COMPLETE, THE VISCOSITY INCREASES, **PREVENTING THE MATERIAL FROM SLUMPING**.

ALL THIS MINIMISES THE EFFORT NEEDED TO REACH THE DESIRED FORM, REDUCING THE TIME REQUIRED FOR TRIMMING AND FINISHING. *(internal data on file)*

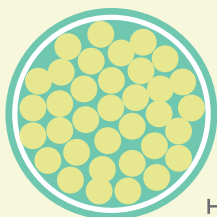
SPHERICAL SHAPE

THE SPHERICAL SHAPE OF THE ART FILLER SYSTEM IS CAREFULLY CONTROLLED TO MAXIMISE LOADING, **MINIMISING STICKINESS AND SIMPLIFYING CARVING**.

THIS REDUCES THE RISK OF PULLBACK AND CAVOSURFACE VOIDS.



COMPETITION



HARMONIZE

REINFORCED FILLER STRUCTURE

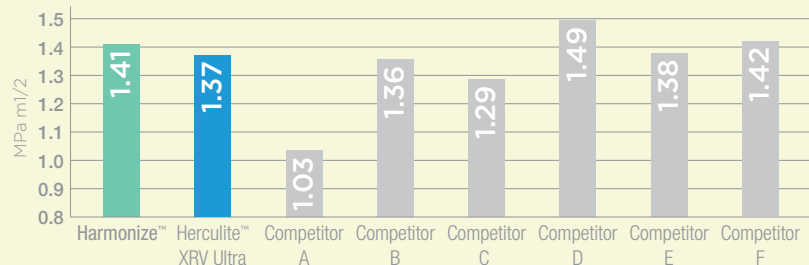
VERY SMALL SPHERICAL SILICA AND ZIRCONIA PARTICLES ARE LINKED TOGETHER AND FUSED IN A REINFORCED STRUCTURE.

THIS IMPROVES THE INTERACTION AND CROSSLINKING BETWEEN THE FILLER SYSTEM AND THE RESIN MATRIX, RESULTING IN **MORE EFFICIENT POLYMERISATION AND HIGHER STRENGTH**.

AS A RESULT, YOU CAN RELY ON LONGER LASTING RESTORATIONS, MORE LIKELY TO **RESIST CHIPPING AND FRACTURES OVER TIME**.

PROVEN MECHANICAL STRENGTH

HARMONIZE DEMONSTRATES **SUPERIOR STRENGTH** TO OTHER COMPOSITES.



(Internal data on file.)