



Plant Moisture Systems

Skye have been designing and manufacturing plant moisture systems since 1987. Our policy of listening to our users comments and requirements have resulted in several design upgrades and additions over the years. The range now includes 6 models in both digital and analogue formats.

The systems feature a high quality design with user safety having the highest priority. The large sample chamber is machined from a single solid piece of high grade brass. The chamber heads have a unique multi-start thread giving easy tightening. This design also ensures that the chamber can never be pressurised unless the head is secure.

Each system is individually tested and certified by an independent test house, to twice its working pressure. A clear perspex shield and safety eye spectacles are provided with each system. The choice of 3 maximum working pressures and 2 chamber heads makes the system suitable for many different kinds of plant measurements. From soft, fleshy specimens to grasses and needles to harder woody species.

The water potential pressure of the plant sample is read from either the digital/ analogue display when moisture is first seen coming from the freshly cut stem. For ease of use the HOLD feature on the Digital version and the high pressure needle on the analogue version allows the display to be frozen at the measurement point, enabling the user to concentrate on the specimen and not on the display.

The system is highly portable. It can be used with small scuba diving gas bottles in the field, or with standard large gas cylinders in the laboratory.



Measures Plant Moisture Potential

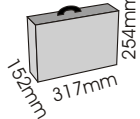
Digital or Analogue Display with HOLD feature for increased accuracy

Choice of chamber heads for fleshy or woody samples
3 models for 40, 50 & 80bar max working pressures

Many increased safety features

PMS SPECIFICATIONS

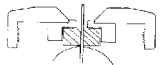
Dimensions:



Chamber Dimensions:

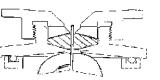


Low Pressure Head



Gentle push fit seal

High Pressure Head



Screw clamp seal

Readout: Digital 12.7mm high LCD in Bar. 2 decade ranges

Sensor: Silicon bonded semi conductor pressure transducer

Resolution: 0.01 Bar (1kPascal)

Power:

Alkaline 9V PP3 battery
No power required for Analogue System

Operating Pressure:

0-40 bar
0-50 bar
0-80 bar

Safety Valve:

Factory set to maximum operating pressure

Test Pressure:

Twice operating system

Gas Used:

Nitrogen
Compressed Air
Carbon Dioxide

Panel Gas Connector:

DHS 440BP

Flexible Hose:

3/8 BSP Female

Controls:

Chamber Fill/ Vent Valve
Chamber Fill/ Rate Valve

Chamber:

Solid Brass, Chrome plated multi-start thread for head fixing

ORDERING INFORMATION

Systems

SKPM 1400/(40,50, 80) - Digital Systems

SKPM 1405/(40, 50, 80) - Analogue Systems

/40 - 40bar Systems - Max. Working pressure 40bar. Supplied with low pressure head, 6mm specimen adaptor, set of 10 stem seals and flexible hose to connect PMS to regulator/bottle

/50 - 50bar Systems - Max. Working pressure 50bar. Supplied with high pressure head, set of compression washers & rubber stem seals & flexible hose to connect PMS regulator/bottle

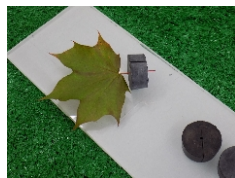
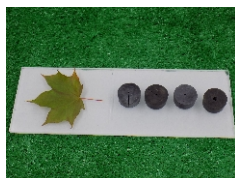
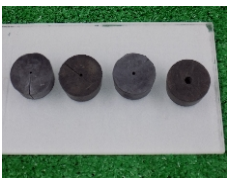
/80 - 80bar systems - Max. Working pressure 80bar. Supplied with high pressure head, set of compression washers & rubber stem seals & flexible hose to connect PMS regulator/bottle.

Accessories

SKPM 1435 - Small Air Bottle

SKPM 1437 - Regulator & 'A' Clamp for bottle

SKPM 1445 - Specimen holding adaptor - 10mm central hole or a slit
SKPM 1420 - Volume reducers (set of 2)



Skye Instruments Ltd

21, Ddole Enterprise Park, Llandrindod Wells
Powys LD1 6DF, United Kingdom

TEL +44 (0)1597 824811

EMAIL skymail@skyeinstruments.com

WEB www.skyeinstruments.com