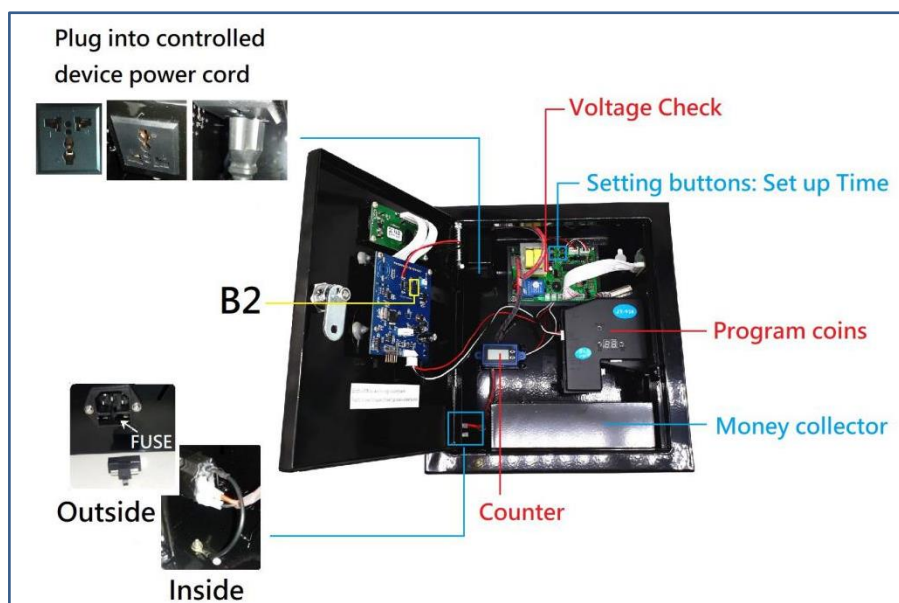


# Coin+Card Operated Timer Box

## Specification

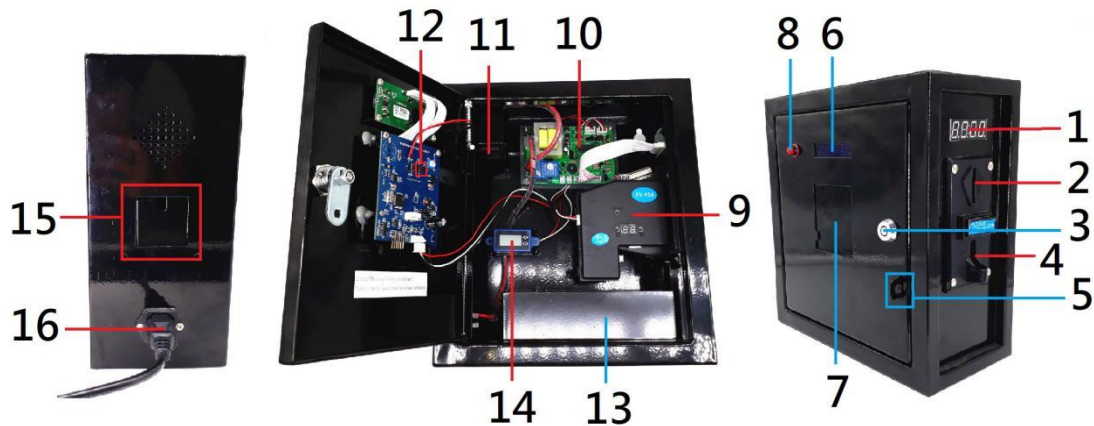
<b>Input and output Voltage</b>	<input type="checkbox"/> AC110V/1250W <input type="checkbox"/> AC220V/2200W
<b>Max current load</b>	10A
<b>Standby</b>	Display shows:00:00
<b>Accumulated time</b>	Yes, add time if insert coins again
<b>How it works</b>	Insert coins/sense card-> Display shows remaining time and supply power to device-> it cuts off power after time runs out
<b>Program coin</b>	Please reference to page 4.
<b>Time setting</b>	Please reference to page 5.
<b>Operating mode setting</b>	Please reference to page 6.
<b>Card reader setting</b>	Please reference to page 7.
<b>Installation</b>	Please reference to page 3.

## Summary



# Coin+Card Operated Timer Box

## Interface Description



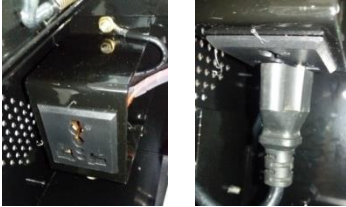
1. Display: (1) SET UP: Shows code and value  
(2) Running Time: Shows remanding time.
2. Coin in
3. Door lock
4. Coin out
5. For Pad Lock
6. Card reader Display
7. Card Sense Zone: put on user card on sense zone
8. Card balance check: push--> put user card on sense zone--> show balance
9. Coin acceptor: Program coins on Multi Coin acceptor (page 4)
10. Time board: Set up PRICE and Time by 4 buttons (page 5)  
Set up MODE SETTING by 4 buttons (page 6)
11. Output socket: Plug in device Power cord (page 3-A)
12. **B2**: Card reader manual setup  
**Inspection**: press B2→sense inspection card→ shows total income→  
press B2→ shows previous total→press B2→ shows Serial number  
**Clear card**: Push B2→Sense card → shows “Clear?”→  
press B1 (No.8) or B2 to cancel or confirm.  
**Manual Set up**:  
Hold on B2 for seconds→Sense management card→Title shows up→  
press B1 or B2 to set→ Hold on B2 for seconds to switch to next title  
Note: Free to Hold on B2 for seconds to skip title
13. Coin collector
14. Reset Counter: check total coin amount. (page 3-G).  
Reset: Press Reset button.
15. Device power cord goes through into No. 11 (page 3-B)
16. Power cord in (page 3-C)

Reference video:

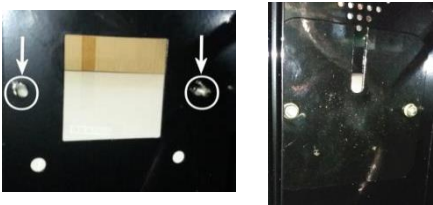
# Coin+Card Operated Timer Box

## Installation

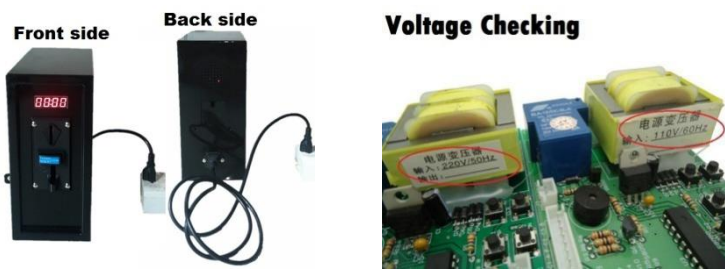
- A. Plug device power cord through No.15 into No.11



- B. Screw iron sheet on from inside box (No.15)



- C. Power on: Plug power cord. **Please check voltage before plug (No.10).**



- D. Please follow ATTACHMENTS to PROGRAM COINS and SET UP TIME.

- E. Power off. Place and fix the box.

- F. Start using

- G. No.14: Reset Counter- check total COIN income



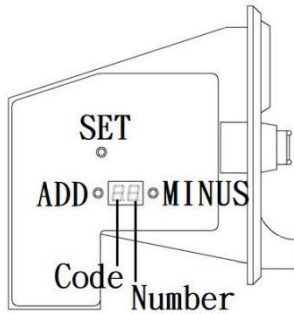
Reset: Press button Reset

- H. Card income check: Please reference to page 6.

# Coin+Card Operated Timer Box

## Program coins

### Step 1-Set up value



Code "H": Set up "15"  
 Code "P": Output signal quantity: inset a coin usually, P1=01 for Lowest value, P+number=P1 multiply value rate  
 Example: 2 dollar, 4 dollar: P1=01,P2=02  
 Code "F": Set up "08"  
**Number:** indicate rank of coin type (1-6).

1. Hold on button "ADD" and "MINUS" simultaneously for seconds."A" shows up.
2. Hold on button "SET" for seconds."E" shows up.  
 Use button "ADD" and "MINUS" to set up coin type between 1 and 6.
3. - Hold on button "SET" for seconds to switch to next code from H to F in cycle.  
 - Please Use button "ADD" and MINUS to set up value.  
 - Please hold on button "SET" for seconds to switch to next code  
 - Please follow following table to set value for code.

First type		Second type		Third type		Forth type		Fifth type		Six type	
code	value	code	value	code	value	code	value	code	value	code	value
H1	15	H2	15	H3	15	H4	15	H5	15	H6	15
P1	SET	P2	SET	P3	SET	P4	SET	P5	SET	P6	SET
F1	08	F2	08	F3	08	F4	08	F5	08	F6	08
A	A shows up after F-> Hold on button "SET" for seconds										
E	E shows up after A->Power off and on when you see "E" AGAIN after A.										

Note:

- Usually, "F" is set up as 08, you can decrease value if you need more accuracy.
- If coin type is not up to 6, "E" shows after coin type reaches your setting.  
 For example: If you set up coin type as 3, "E" shows up after F3. You can power off and on after finish "F3"
- If you want to change value few, free to hold on button "SET" to skip others.

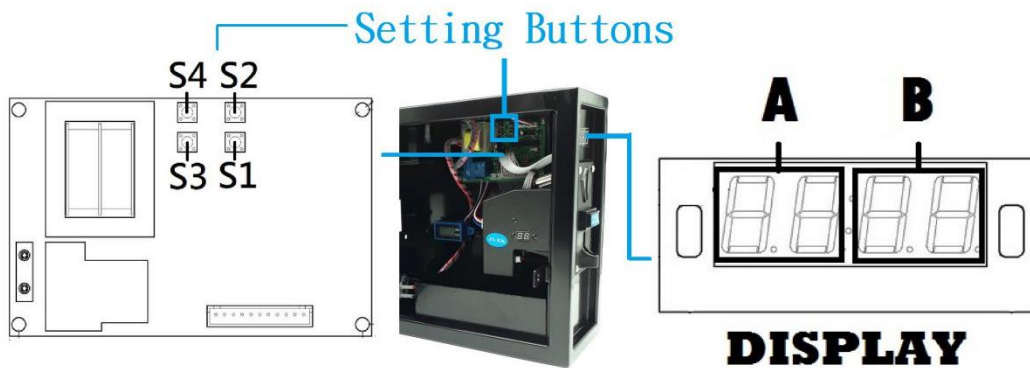
### Step 2-Sample Coin

1. Hold on button "SET" for seconds, and "A1" shows up from display.
2. Please insert coins of **TYPE 1** into coin entry until "A1" shows up again.
3. Please repeat **No.1** and **No.2** until all coin types are sampled.
4. Please power off and on.

**Tip:** If you want to re-sample few types, hold on button "SET" to skip others.

# Coin+Card Operated Timer Box

## Set up Price and Time-Timer Board



**Max Time:99:59**

**Display: 99:59**

**A:** 2 digit: either HOUR or MINUTE

**B:** 2 digits: either MINUTE or SECOND

Please following page 5 to adjust Time type.

## TIME SETTING

Please follow CODE ON DISPLAY and use button "S1" and "S2" to set up number

### ● COIN QUANTITY OF TYPE 1/ INPUT SIGNAL QUANTITY AND TIME:

1. Please press button "S4". "B" flashes. Please set up NUMBER to active device (01-50).  
For example: 02, inset 2 pcs of coin type 1/receive 2 signals to start device.
2. Please press button "S4", "A" flashes. Please set up TIME (01-99).
3. Please press button "S4", "B" flashes. Please set up TIME (01-99).
4. Please press button "S4" 4 TIMES.
5. Please set up TIME for Warning Sound.
6. Please press button "S4" to finish.

### ● GIVEN TIME:

Add time by free if input signals reach SETTING RATE during time is running.

#### Example Setting:

input signal to active device: 01, input signals for given time: 03 give time: 02:10

Add time "02:10" free if receive "3 signals" during time is running.

1. Please press button "S4" 4 TIMES. "B" flashes. Please set up RATE OF INPUT SIGNAL QUANTITY.
2. Please press button "S4", "A" flashes. Please set up GIVEN TIME.
3. Please press button "S4", "B" flashes. Please set up GIVEN TIME.
4. Please press button "S4" to finish.

# Coin+Card Operated Timer Box

## OPERATING MODE SETTING

### ● Mode Setting

Please follow table to set up operating function:

1. Please hold on button "S1" and "S2" simultaneously for 3 seconds to get into **MODE SETTING**.
2. Please use button "S1" and button "S2" to set up number for **CODE**
3. Please press button "S4" to switch to next code

Function	Code on Display		Description
	A	B	
Running Time	01	<b>01</b>	Time runs down without pressing button
Time Type	02	<b>03</b>	MINUTE: SECOND
		04	HOUR: MINUTE
Memory	03	05	Yes: Remaining time keep running after power off and on
		<b>06</b>	No: Standby power off and on
Back to standby	04	1-30	user has no action after push buttons or receive signals in setting time
Default: 01-03: Bold and base line. 04: not use the function.			

### Reference video:

Program coin: <https://youtu.be/7zvvU75dZpw>

Time setting: [https://youtu.be/ftIOd\\_0OHdk](https://youtu.be/ftIOd_0OHdk)

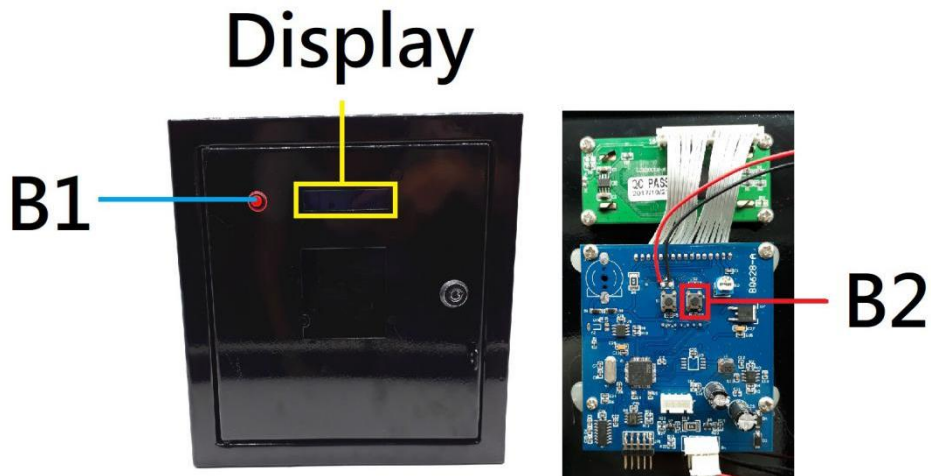
Operating mode setting: <https://youtu.be/iQKfqDHJNQU>

Installation: [https://youtu.be/\\_Ib93H35nuw](https://youtu.be/_Ib93H35nuw)

More information: [juyao66.com](http://juyao66.com)

# Coin+Card Operated Timer Box

## Card Reader Usage



### 1. For user:

1-1. Check balance:

Push B1 → sense user card → Display shows balance

1-2. Pay from balance: send signal after deduct cost from balance

### 2. For business: Change setting

(1) If you have card writer, You can use software to set up.

save setting on management card → sense management → finish setting.

(2) If you do not have card writer, Please follow **TABLE 1** to set up manually.

- Hold on B2 for seconds → Sense management card → Title shows up →

press B1 or B2 to set → Hold on B2 for seconds to switch to next title

- Free to Hold on B2 for seconds to skip title

Title	Option	Title	Option	Title	Option
<b>Output Pulse</b>	1-50	<b>Standby show</b>	None Welcome Cost	<b>Cost Unit</b>	CENT
					10
					CNET
					100CEN T
<b>Cost</b>	1-100	<b>Duration</b>	30ms 50ms 100ms	<b>NO NC</b>	NO
					NC

**Table 1**

3. **Inspection card:** press B2 → sense inspection card → shows total income →

press B2 → shows previous total → press B2 → shows Serial number

**Clear card:**

Push B2 → Sense card → shows “Clear?” → press B1 or B2 to cancel or confirm.