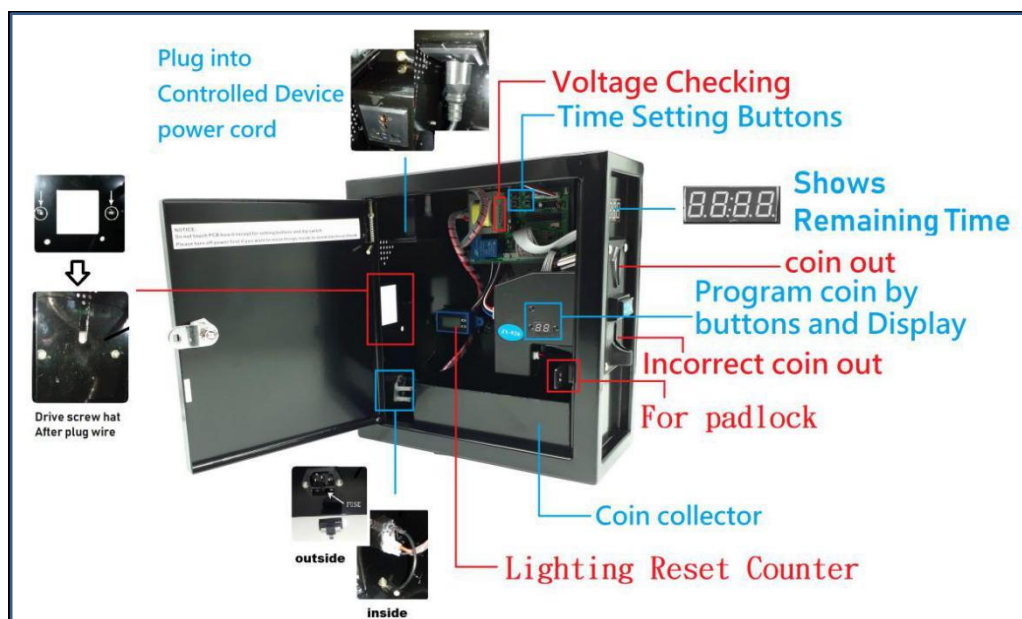
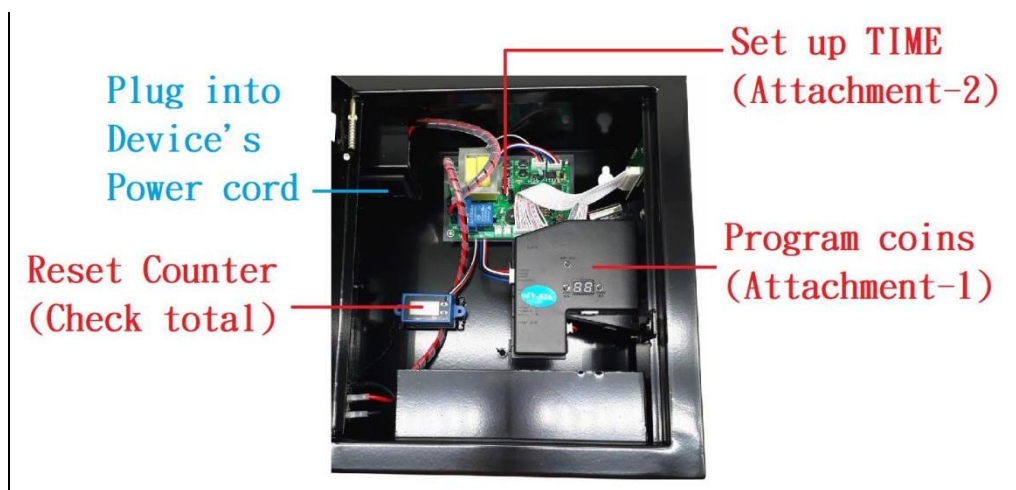


Multi Coins Operated Timer Box

Specification

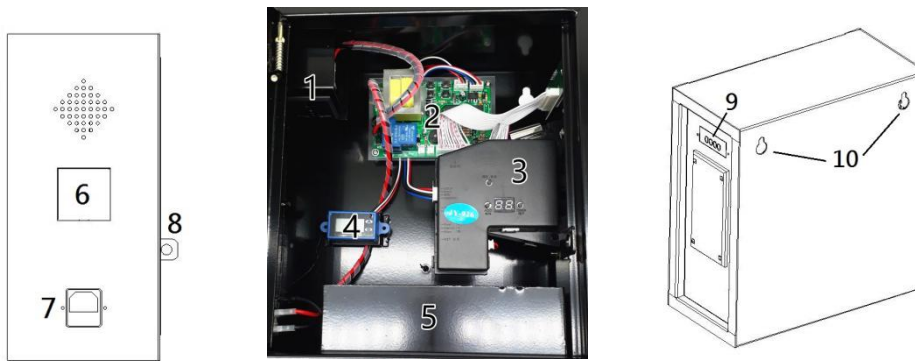
Input and output Voltage	<input type="checkbox"/> AC110V/1250W <input type="checkbox"/> AC220V/2200W
Max current load	10A
Standby	Display shows:00:00
Accumulated time	Yes, add time if insert coins again
How it works	Insert coins-> Display shows remaining time and supply power to device-> it cuts off power after time runs out
Program coin	Please reference to page 3. Page 2-D
Time setting	Please reference to page 4. Page 2-E
Operating mode setting	Please reference to page 5
Installation	Please reference to page 2.

Description



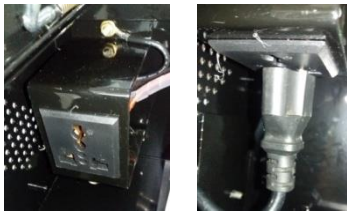
Multi Coins Operated Timer Box

Installation

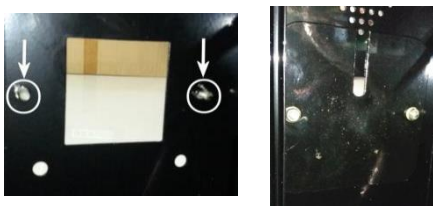


Reference-1

A. Plug device power cord through No.6 into No.1



B. Screw iron sheet on



C. Power on: connect power cord to 110V



D. No.3: Please follow “Attachment-1” specification to **PROGRAM COINS**

E. No.2: Please follow “Attachment-2” specification to **SET UP TIME** set up time

F. Power off. Place and fix the box from No. 10.

G. Start using

H. No.4: Reset Counter- check total income



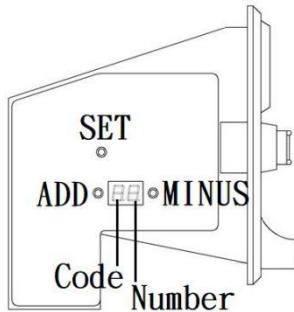
Manual Reset: Press Reset button.

No.5: money case

Multi Coins Operated Timer Box

Program coins

Step 1-Set up value



Code "H": Set up "15"
 Code "P": Output signal quantity: inset a coin usually, P1=01 for Lowest value, P+number=P1 multiply value rate
 Example: 2 dollar, 4 dollar: P1=01,P2=02
 Code "F": Set up "08"
Number: indicate rank of coin type (1-6).

1. Hold on button "ADD" and "MINUS" simultaneously for seconds."A" shows up.
2. Hold on button "SET" for seconds."E" shows up.
 Use button "ADD" and "MINUS" to set up coin type between 1 and 6.
3. - Hold on button "SET" for seconds to switch to next code from H to F in cycle.
 - Please Use button "ADD" and MINUS to set up value.
 - Please hold on button "SET" for seconds to switch to next code
 - Please follow following table to set value for code.

First type		Second type		Third type		Forth type		Fifth type		Six type	
code	value	code	value	code	value	code	value	code	value	code	value
H1	15	H2	15	H3	15	H4	15	H5	15	H6	15
P1	SET	P2	SET	P3	SET	P4	SET	P5	SET	P6	SET
F1	08	F2	08	F3	08	F4	08	F5	08	F6	08
E	Please power off and on after you see "E" AGAIN.										

Note:

- Usually, "F" is set up as 08, you can decrease value if you need more accuracy.
- If coin type is not up to 6, "E" shows after coin type reaches your setting.
 For example: If you set up coin type as 3, "E" shows up after F3. You can power off and on after finish "F3"
- If you want to change value few, free to hold on button "SET" to skip others.

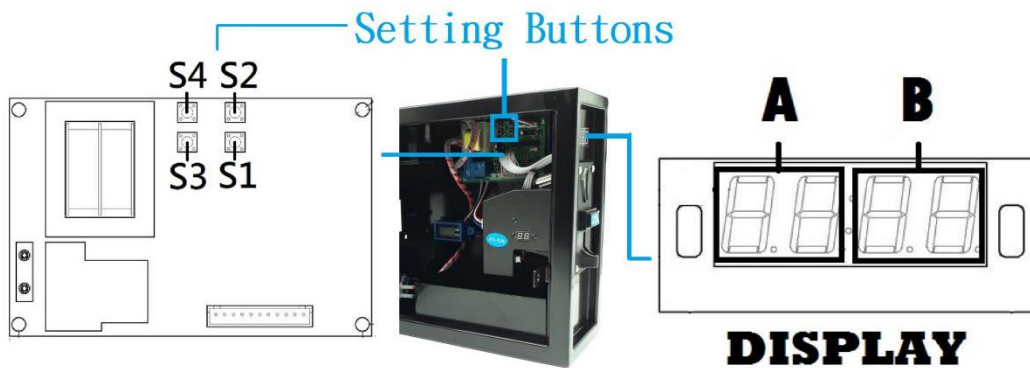
Step 2-Sample Coin

1. Hold on button "SET" for seconds, and "A1" shows up from display.
2. Please insert coins of **TYPE 1** into coin entry until "A1" shows up again.
3. Please repeat **No.1** and **No.2** until all coin types are sampled.
4. Please power off and on.

Tip: If you want to re-sample few types, free to hold on button "SET" to skip others.

Multi Coins Operated Timer Box

Time Set up



Max Time:99:59

Display: 99:59

A: 2 digit: either HOUR or MINUTE

B: 2 digits: either MINUTE or SECOND

Please following page to adjust Time type.

TIME SETTING

Please follow CODE ON DISPLAY and use button "S1" and "S2" to set up number

● COIN QUANTITY OF TYPE 1/ INPUT SIGNAL QUANTITY AND TIME:

1. Please press button "S4". "B" flashes. Please set up NUMBER to active device (01-50).

For example: 02, inset 2 pcs of coin type 1/receive 2 signals to start device.

2. Please press button "S4", "A" flashes. Please set up TIME (01-99).
3. Please press button "S4", "B" flashes. Please set up TIME (01-99).
4. Please press button "S4" 4 TIMES.
5. Please set up TIME for Warning Sound.
6. Please press button "S4" to finish.

● GIVEN TIME:

Add time by free if input signals reach SETTING RATE during time is running.

Example Setting:

input signal to active device: 01, input signals for given time: 03 give time: 02:10

Add time "02:10" free if receive "3 signals" during time is running.

1. Please press button "S4" 4 TIMES. "B" flashes. Please set up RATE OF INPUT SIGNAL QUANTITY.
2. Please press button "S4", "A" flashes. Please set up GIVEN TIME.
3. Please press button "S4", "B" flashes. Please set up GIVEN TIME.
4. Please press button "S4" to finish.

Multi Coins Operated Timer Box

OPERATING MODE SETTING

● Mode Setting

Please follow table to set up operating function:

1. Please hold on button "S1" and "S2" simultaneously for 3 seconds to get into **MODE SETTING**.
2. Please use button "S1" and button "S2" to set up number for **CODE**
3. Please press button "S4" to switch to next code

Function	Code on Display		Description
	A	B	
Running Time	01	01	Time runs down without pressing button
Time Type	02	03	MINUTE: SECOND
		04	HOUR: MINUTE
Memory	03	05	Yes: Remaining time keep running after power off and on
		06	No: Standby power off and on
Back to standby	04	1-30	user has no action after push buttons or receive signals in setting time
Default: 01-03: Bold and base line. 04: not use the function.			

Reference video:

Program coin: <https://youtu.be/7zvvU75dZpw>

Time setting: https://youtu.be/ftIOd_0OHdk

Operating mode setting: <https://youtu.be/iQKfqDHJNQU>

Installation: https://youtu.be/_Ib93H35nuw

More information: juyao66.com